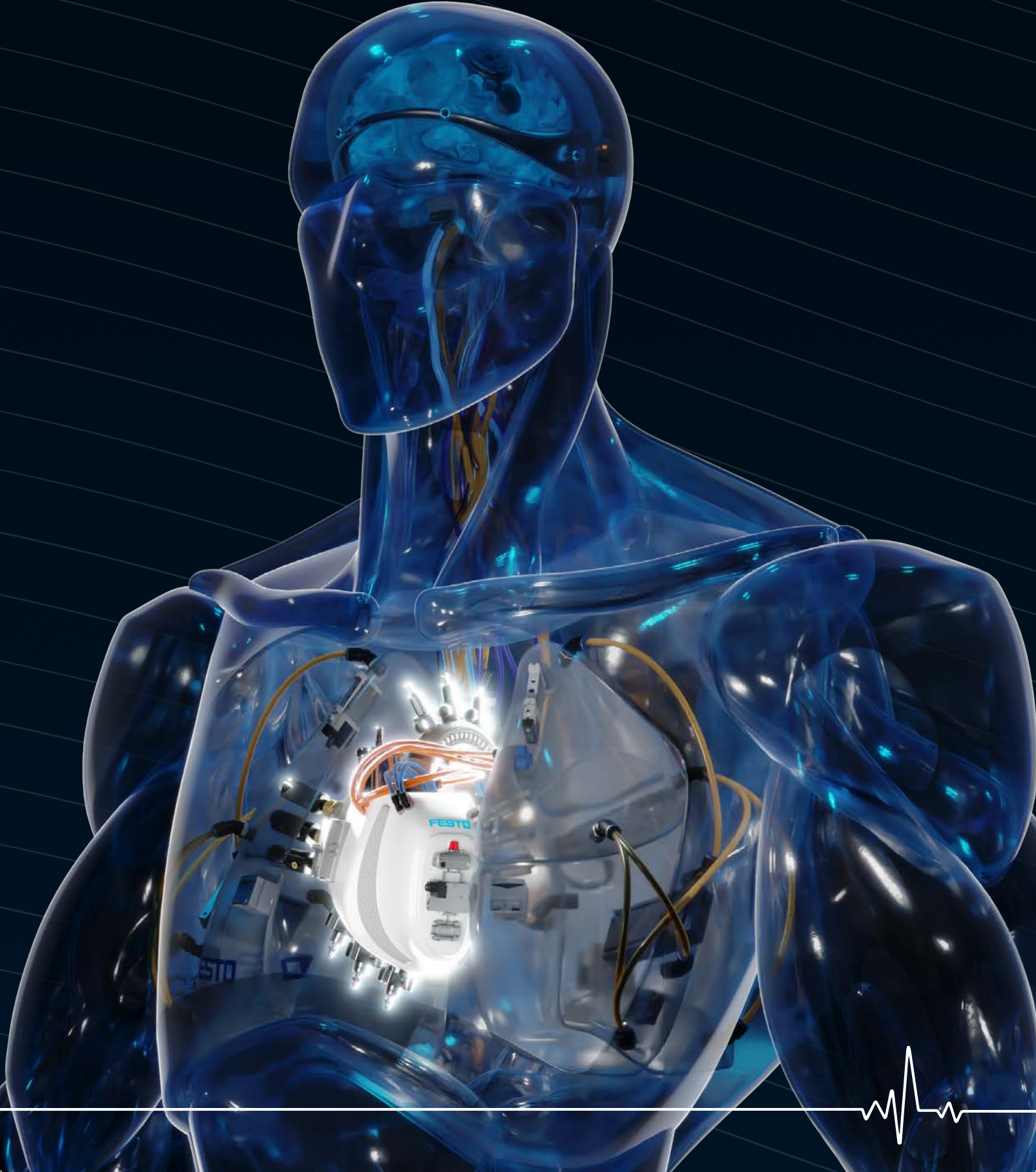


**The heart of absolute Automation 2.0**  
Process Automation

**FESTO**







## **Process Automation overview**

Festo at the heart of absolute Automation 2.0 **4**

## **Process Automation Products**

Linear Actuator DFPC **6**

Quarter-turn Actuator DFPD-C (for Chemical Industry) **6**

Pneumatic Positioner CMSH **7**

Angle Seat Valve VZXA **7**

Stainless Steel Filter Regulator PCRP **8**

Limit Switch Boxes SRBI **8**

Pinch Valve VZQA **9**

Valve Terminal VTUG **9**

Valve Terminal VTSA **10**

Valve Terminal MPA **10**

Butterfly Valve VZAV **11**

Quarter-turn Actuator Unit KDFP **11**

Configurator Tools KVZA and KVZB **12**

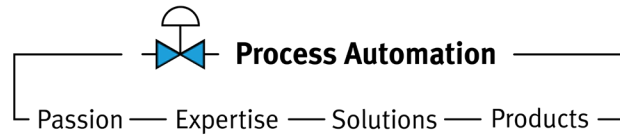
Butterfly Valve Unit KVZA **12**

Ball Valve Unit KVZB **12**

## **Didactic Training Courses**

Process Automation courses **14**

Festo Learning Experience **15**



### **Festo at the heart of absolute Automation 2.0**

For almost 50 years, Festo South Africa has been an efficiency catalyst for hundreds of machines and plants across Africa. We have achieved this through our top of the range products, software and tools in our three primary business units. This year, we are taking you on a journey to higher productivity from Process, Electric to Pneumatic Automation using the human body analogy.

Although the heart is the size of a human fist, it plays an immense role in the proper functioning of a human body. It pumps oxygen and nutrient-rich blood to the brain, lungs and throughout the body to sustain life. The heart can be compared to a pump in an industrial plant. The pump ensures that media is distributed throughout the plant at the perfect pressure, temperature and flow. In this analogy, blood flows to and from the heart through the circulatory system, consisting of valves and arteries. The same applies to the industry plant. This is why it is crucial for your valves, pipes, and actuation to be optimised at all times.

At Festo, we understand that we need to treat your plant the same way a doctor treats the entire human body. This is why we provide you with solutions for all your production levels. Whether you need a valve to open and close large volumes of media or fine control that needs to be precisely regulated, we have the products and expertise for you.

The heart beats 100 000 times in a day. With over 4 500 Process Automation solutions, we will make sure you do not miss a beat!

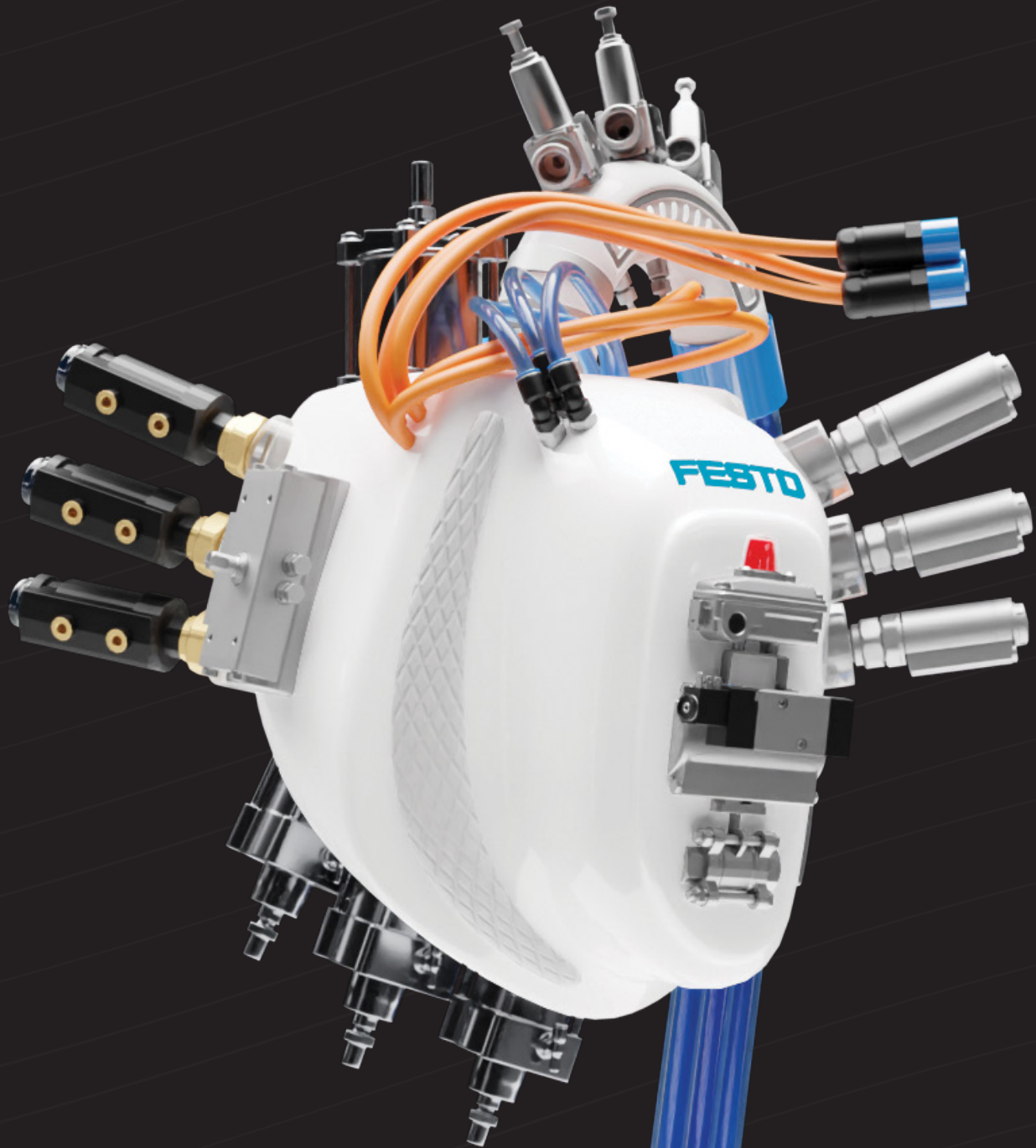
**We help you find the perfect solutions for your entire value chain.**

**We are a partner that you can trust.**

**We are absolute Automation!**

**→ WE ARE THE ENGINEERS  
OF PRODUCTIVITY.**

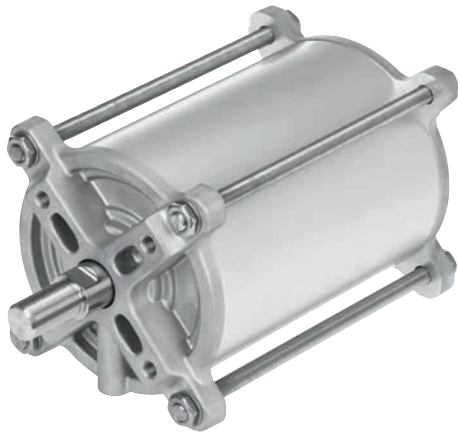




## Solutions for every production level

Festo caters to all your Process Automation needs. Whether you need a simple process valve or a turnkey offering, we have the perfect solutions for you.

## Process Automation Products



### Linear Actuator DFPC

Preconfigured from stock or individually configured: The new double-acting Linear Actuator DFPC can be both. It has been specially designed for actuating process valves such as gate valves, knife gate valves and pinch valves.

It is ideal for the mining industry, power stations, water and wastewater treatment as well as steel industries.

#### Features

- Sturdy and corrosion resistant.
- Provides numerous configuration options.
- Interfaces for process valve to ISO 5210 and ISO 15552 with protruding threaded rods.
- Piston rod/thread can be adjusted.
- Available in an ATEX II 2GD option.
- Available as standard or individually configured.



### Quarter-turn Actuator DFPD-C (for Chemical Industry)

The Festo DFPD-C offers hard-anodised end caps, blow-out proof, adjusting screws for the end position, shaft centring ring and more. The actuator's design features make it suitable for use in the harsh conditions often found in the chemical industry.

#### Features

- Specially developed for applications with extremely high requirements.
- Resistant materials.
- Allows the safe setting of the end position.
- Easy to maintain.
- With manifold block:
  - \* Interface to VDI/VDE 3847-2
  - \* No tubing required
  - \* Hot-swap function
- Suitable for actuating butterfly valves, plug valves and ball valves in process plants.



#### Pneumatic Positioner CSMH

The latest CSMH Pneumatic Positioner from Festo boosts high-performance and a long service life. Its high-flow capacity and low consumption combination make it an ideal choice for numerous Process Automation applications. The easy to use positioner also provides high position accuracy independent of actuator size/type.

##### Features

- Digital electro-pneumatic positioner for the linear and rotary actuator.
- Low air consumption.
- Easy interpretation of diagnostics data.
- Status feedback acc NE107.
- FDI package for easy field device integration.
- Easy installation conforming to all major mounting standards.
- Multiple functions in one unit, namely single/ double-acting, fail close, fail open and fail in position.



#### Angle Seat Valve VZXA

Thanks to its range of variants, the Festo VZXA easily adapts to the task at hand. Its adaptability maximises flexibility and minimises the effort involved in designing your application. The carefully thought-out product architecture and easy-to-clean design allows for the seamless combination of valve bodies and actuators. In addition, the modular product concept makes it easier to modify and maintain systems without having to remove the entire valve.

##### Features

- Highly flexible with extremely high-flow rates.
- Long service life.
- Robust and easy-to-clean stainless steel process valve.
- The actuator can be replaced without opening the piping (unpressurised).
- Ideal for highly viscous media, liquids, gases or vapours.
- Hygienic design that is insensitive to dirt.

## Process Automation Products



### Stainless Steel Filter Regulator PCRP

In corrosive atmospheres or extreme temperatures from  $-60\text{ }^{\circ}\text{C}$  to  $+80\text{ }^{\circ}\text{C}$ , the extremely robust filter regulator PCRP performs well - offering high flow rates and reliable pressure control. The housing and interior are entirely made of premium stainless steel to ensure high corrosion resistance. The PCRP series is available in sizes  $\frac{1}{4}$  and  $\frac{1}{2}$  with G or NPT threads.

#### Features

- Complete stainless steel design.
- Suitable for extremely wide temperatures range from  $-60$  to  $+80\text{ }^{\circ}\text{C}$ .
- UV-resistant.
- Reliable manual drain.
- Suitable for potentially explosive areas.
- Impressive stable pressure control characteristics with constant and high flow rates of up to  $4,115\text{ l/min}$ .



### Limit Switch Box SRBI

Compact solution for electrical feedback signals and monitoring the position of process valves that are actuated with pneumatic quarter-turn actuators. It can be mounted directly without other accessories on quarter-turn actuators with a port pattern to VDI/VDE 3845.

#### Features

- Compact housing with M12 plug connection.
- Direct mounting on quarter-turn actuators to VDI/VDE 3845.
- Suitable for quarter-turn actuators for process automation with position indicators.
- LED status indicator for switching status and voltage supply.

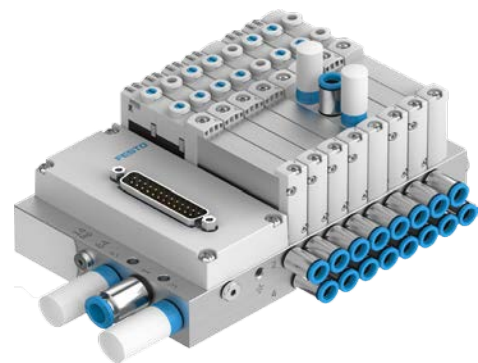


### Pinch Valve VZQA

Normally closed or normally open? The choice is now yours. This Festo pinch valve enables you to better control the flow of media such as granulate, liquids containing solid particles or highly viscous and abrasive media. This valve guarantees no flow resistance, no blockages, no dead spaces and is easy to clean – allowing your media to flow freely.

#### Features

- Compact NC version.
- Individual components modularly configurable.
- Quick to install.
- Easy to maintain and clean.
- For critical, abrasive and viscous media.
- Flow direction can be freely selectable.
- Quick and easy replacement of the diaphragm.



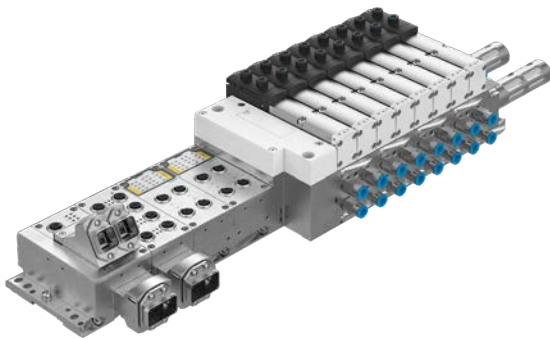
### Valve Terminal VTUG

The Festo VTUG offers excellent value for money. The valve terminal has many multi-pin variants and a simple connection for all standard fieldbuses and IO-Link®. It is also quick to install, configure and suitable for control cabinet installation. This Festo valve is perfect for everyone who appreciates high pneumatic functionality and electric modularity.

#### Features

- All standard fieldbuses.
- IO-Link®.
- Many multi-pin variants.
- Up to 24 valve positions.
- Available in 2 widths.
- Perfect for all applications requiring high flow rates.
- Valves can be replaced during operation.
- Energy-efficient thanks to reverse operation and targeted pressure reduction.

## Process Automation Products

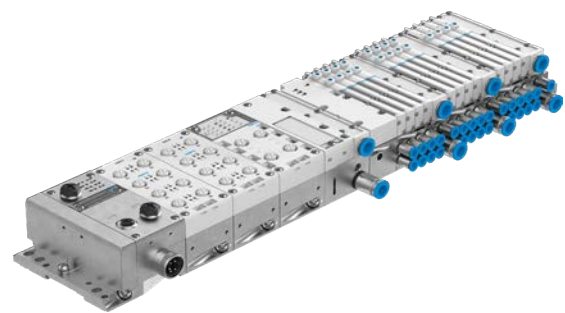


### Valve Terminal VTSA

The Festo VTSA is ideal for maximum pneumatic and electrical function integration. Its ability to combine five valve sizes on one valve terminal makes it unique. The easy to integrate VTSA is fully compliant with ISO 15407-2 and ISO 5599-2. It can also be used as a complete installation solution for large-scale machine concepts.

#### Features

- Maximum function integration.
- Very high flow rate of up to 4,000 l/min.
- Allows reverse operation of valves and pressure regulators.
- Five valve sizes on one valve terminal.
- Fully compliant with ISO 15407-2 and ISO 5599-2.
- Valve replacement during operation (hot swap).

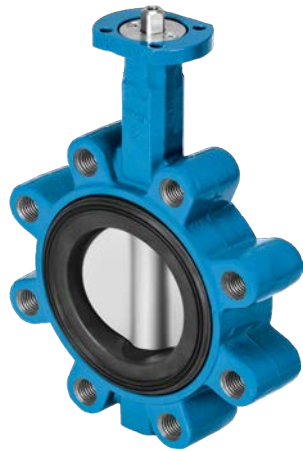


### Valve Terminal MPA

Maximum function integration, serial communication for electrics and pneumatics as well as a comprehensive diagnostics concept - these are just some of the unique features that the Festo MPA offers. It is extremely compact and has more valve functions than any other valve terminal.

#### Features

- 128 valve functions/64 valve positions.
- Electrical voltage zones.
- Proportional directional control valves.
- Pressure sensors.
- Pressure shut-off plate (hot-swap).
- Diagnostics management.
- Compact and space-optimised for high performance directly on the drive.



#### Butterfly Valve VZAV

Highly functional, sturdy, wear-resistant, reliable, and non-corroding are some of the unique features that the Festo Butterfly Valve VZAV offers. The basic model of this balanced butterfly valve for shut-off and control comes with a wide variety of materials. This means it can be used in most industrial applications such as building services, engineering as well as water and wastewater treatment.

##### Features

- Modular and versatile range.
- Optimised system solutions through effective joint venture.
- Reliable blowout protection.
- Replaceable liner for long life.
- Highly resistant to corrosion due to excellent body coating.
- Ultralene Coating™ for outstanding resistance to wear and shock.



#### Quarter-turn Actuator Unit KDFP

This configurator provides support for the high volume of requests for customised quarter-turn actuator units. It is now possible to find, select, size, and order the right quarter-turn actuator unit without waiting. In addition, access to prices and delivery times is provided immediately after configuration. Simply visit [www.festo.co.za](http://www.festo.co.za) and search for the KDFP to easily configure this product.

##### Features

- Provides support throughout the entire process, from searching for products to ordering.
- Configuration, sizing, documentation, RFQ, ordering and delivery of the quarter-turn actuator units are combined in a single tool.
- User-friendly.
- Specific 2D/3D CAD files available for download after configuration.
- Configuration-compatible bill of materials available for download.

## Configurator Tools KVZA and KVZB

The Festo configurator tool for process valves makes selecting the right solution easy and less time-consuming. A task that used to take a few hours now takes minutes to complete. This configurator tool has made finding, selecting, sizing and ordering the perfect Ball Valve with KVZB or Butterfly Valve with KVZA simple with just a few clicks. All users have to do is select a few parameters, and the configurator will immediately suggest appropriate combinations, making engineering in the Process Industry fast and reliable. Simply visit [www.festo.co.za](http://www.festo.co.za) and search for the KVZA or KVZB to start configuring.

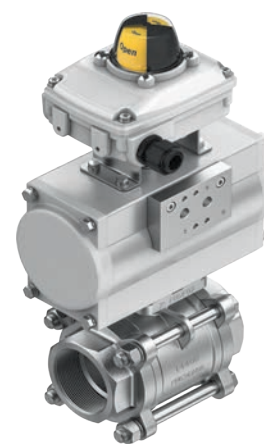


### Butterfly Valve Unit KVZA

This valve unit comprises of a range of tried and tested Festo components. The NAMUR valves, quarter-turn actuators, limit switch boxes, positioners and adapter kits in the butterfly valve are perfectly matched and pre-assembled. It is ideal for liquids, gases and solids in applications that are corrosive, abrasive and water-based.

#### Features

- Available in wafer and lug styles.
- Manually actuated with hand lever.
- Automatically actuated with quarter-turn actuator.
- Available in nominal width from DN25 to DN400.



### Ball Valve Unit KVZB

The Festo Ball Valve KVZB consists of a wide range of components such as quarter-turn actuators, NAMUR valves, switch boxes, positioners and all necessary adapters. This means you have the freedom to configure controlled or open/closed systems. The KVZB is suitable for a wide range of applications in various industries such as chemical, mining, food and beverage.

#### Features

- Manually actuated with hand lever.
- Automatically actuated with quarter-turn actuator.
- Controlled operation with quarter-turn actuator and valve positioner.
- Can be normally closed or open.
- Available from 1/2 inch to 8 inch.



# Didactic Training Courses

## Process Automation



Process Automation is a broad and complex field that covers several industry segments and thus has a great need for qualified professionals. Festo Didactic has a level of understanding and insight into your challenges in the industry. This is why we offer CPD accredited webinars and face-to-face training courses that will systematically prepare you to operate automation products and navigate complex challenges.

### Face-to-face Training

#### **PA101 - Process Valves and Actuation Technology**

This course provides you with insights into process valve technology, including valve/drive selection based on materials and standards. It also gives you an understanding of valve control systems. The course focuses on actuator selection and sizing for the correct application.

#### **PA211 - Principles of Industrial Measurement, Control, Instrumentation and Process Valves**

Process control is a unique part of the industry that deals with the measuring and controlling of variables that influence materials and equipment during the development of a product. This course describes the working principles of these instruments that are used

to do the measuring and controlling.

#### **PA311 - Water Treatment**

The water and wastewater sector suffers from the lack of capacity and performance, which negatively impacts the environment, public health and economic processes. Despite large-scale investments in water infrastructure, we still face challenges in operation and maintenance of plants. This course equips attendees with skills to treat water effectively and comply with quality regulations.

#### **PN111 - Modern Industrial Pneumatics - Basic (Includes Electro-Pneumatics)**

This training course was designed to fulfil the expectations of people who need to understand and apply the requirements of modern industrial pneumatics with real shop-floor applications. The training course sets a good background for further automation training.

Please email us at [didacticTaC.za@festo.com](mailto:didacticTaC.za@festo.com) to register for our CPD accredited webinars and face-to-face courses.

# Didactic Training Courses

## Festo Learning Experience



### The digital learning portal for individual learning experiences

In addition to the webinars and face-to-face courses, we offer Process Automation prepared learning content through the Festo Learning Experience. This platform combines industry expertise with didactic know-how to create unique learning experiences. The portal is based on multimedia learning nuggets that can be easily adapted and combined to form individual learning paths. The platform offers numerous benefits, such as creating and modifying existing courseware, interactive multimedia learning, and more.

### Process Automation courses tailored for your individual needs

#### Process Automation

This course deals with the basics of Process Automation, including handling substances, system planning, and engineering processes in practice.

#### Open and Closed-Loop Control

This course uses practical examples to show the difference between open- and closed-loop control in automation. This includes types of control, signal processing and regulators.

### Pressure and Level Switches

This course covers the operation of pressure and level switches in the context of the Instrumentation and Process Control Training System.

### Water Purification

This course will introduce you to the water purification process, including the topics of precipitation, flocculation and the need for water disinfection.

Visit [lx.festo.com](https://lx.festo.com) for more courses or scan the QR code.





**Festo PTY LTD**  
**South Africa**

**Tel:** 08600 FESTO (33786)  
**Email:** [sales.za@festo.com](mailto:sales.za@festo.com)  
**[www.festo.co.za](http://www.festo.co.za)**