

# Hose & Attachment Solutions Guide

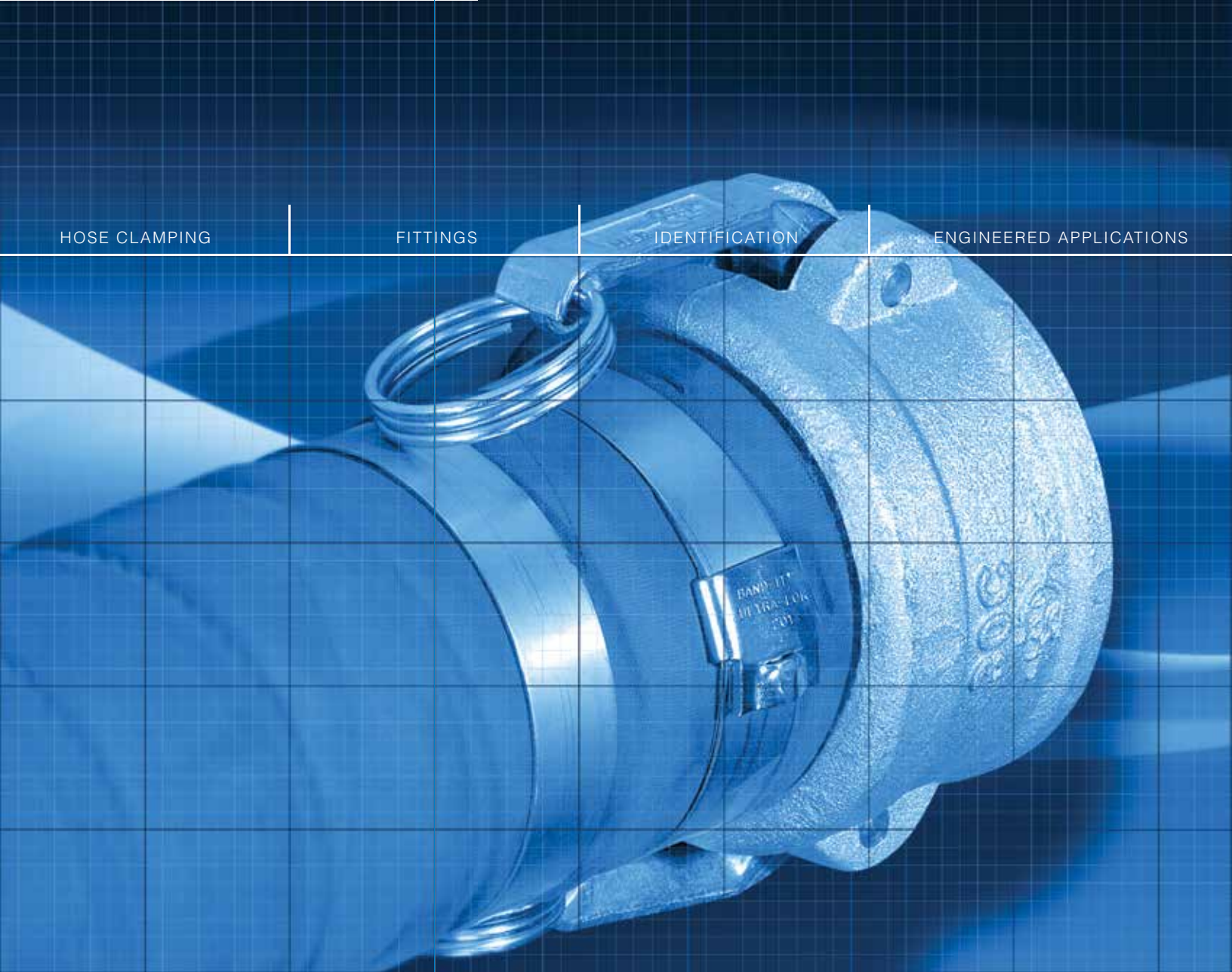
[www.band-it-idex.com](http://www.band-it-idex.com)

HOSE CLAMPING

FITTINGS

IDENTIFICATION

ENGINEERED APPLICATIONS





## **BAND-IT® IDEX, Inc. is an innovative clamping solutions company providing service and value second to none!**



Founded in Denver, Colorado in 1937, BAND-IT® is acknowledged as the world's leader in quality engineered band clamping systems. A unit of IDEX corporation, BAND-IT® has an international network of representatives and distributors, with manufacturing and distribution facilities serving users worldwide.

### **IDEX Core Values**

Our **CUSTOMER** is our priority.

We **GROW** our enterprise and people.

Our **INTEGRITY** is paramount.

We strive for **EXCELLENCE**.

We are passionate about **SUCCESS**.

### **Certificates**

As demonstration of our ongoing commitment to excellence, quality and environmental management, BAND-IT is proud to display the following certificates of compliance to the prestigious International Standards:

- ISO 9001
- ISO 14001
- TS16949

Since becoming ISO/TS certified, BAND-IT® continues to seek new and innovative ways to manufacture products through our continuous efforts of upgrading equipment, employee training and internal quality assurance in our quest to deliver the best products within the market place to our customers.

### **Patents:**

- 5,483,998 - Lip lock formation for Ultra-Lok®
- 5,566,726 - Ultra-Lok® tension tool
- 5,303,571 - Method of producing an improved one-piece band clamp
- 5,452,523 - Measuring banding material in lengths
- 5,850,674 - Smooth band clamp with movable ball locking element
- 6,014,792 - Ultra-Lok® band clamp including separately attached buckle
- 6,260,704 B - Band tote assembly
- 6,481,467 - Pneumatic Automatic Air Tool S350
- 7,650,680 - Improved dimple locking method for bundling objects
- 7,484,274 - Free end band and seal
- 8,146,212 - Free end band

### **Trademarks:**

BAND-IT®, BAND-IT Jr.®, Junior®, BAND-FAST®, COLOR-IT®, Tri-Lokt®, Thriftool®, Tie-Lok®, Tie-Lok Tool®, Band-Lok®, Self-Lok®, and Ultra-Lok® are registered trademarks owned by BAND-IT IDEX, Inc., a unit of IDEX Corporation.

#### **World Headquarters**

North American Operations

BAND-IT IDEX, Inc.

Western Hemisphere Sales and Marketing

Tel: (303) 320-4555

Toll Free : 800-525-0758

Fax: (303) 333-6549

Email:  
info.BAND-IT@idexcorp.com

Website:  
www.band-it-idex.com

#### **European Operations**

BAND-IT Company Limited

Tel: (44) 1246-477333

UK Sales Tel:  
(44) 1246-479479

European Sales Tel:  
(44) 1246-479480

Fax (44) 1246-476324

Sales Email:  
BAND-ITUKSALES.BAND-IT@idexcorp.com

Email:  
EUROPEinfo.BAND-IT@idexcorp.com

Website:  
www.band-it-idex.eu

#### **Pacific Rim Sales Office**

Tel: (65) 6265-8853

Fax: (65) 6764-4020

Email:  
PACIFICRIMinfo.BAND-IT@idexcorp.com

#### **Latin American Sales Office**

Tel: (52) 55 5825-8502

Fax: (52) 55 5825-8502

Email:  
LAinfo.BAND-IT@idexcorp.com

#### **Japan Sales Office**

Tel: (81) 90 2917 8463

Email:  
BID.Japaninfo.BAND-IT@idexcorp.com

#### **China Shanghai Sales Office**

Tel: (86) 512 6283-3000

Fax: (86) 512 6283-3928

Email:  
BIDChina.BAND-IT@idexcorp.com

Website  
www.band-it.com.cn

Ultra-Lok® Preformed Clamp.....	5
Junior® Smooth ID.....	8-9
Center Punch.....	11
Adjustable Clamping Systems.....	12
Pro-Mark™ Pin Marking System.....	13
Identification System.....	14-15
Hose Fittings.....	16
Tools.....	18-19



## DESCRIPTION

**Chemical Plants, Food Processing, Plant Maintenance, Government, Communications & Utility**

**Engineered™ Fastening and Bundling Systems for Extreme Conditions:** Hose, identification, Engineered Applications.

**Products:** Ultra-Lok, Junior Smooth ID, Center Punch, Adjustable Clamping Systems, BAND-IT® Tie, BAND-FAST®, Uncoated and Coated Band & Clip.

### Benefits:

- Superior performance in extreme temperatures, chemical exposure, salt spray conditions and UV light exposure
- Permanent and secure locking mechanisms
- Reliable and efficient installation tools.
- Low installed cost and long service life
- Proven performance coatings for abrasion protection and dissimilar metal contact (Nylon11, PPA 571, Polyester, Epoxy)
- Proven and controlled materials - 201SS, 304SS, 316SS, Alloy 400 & 625
- Quality certified manufacturing process management – ISO9001 with TS 16949

### Identification Systems:

**Indoor/Outdoor:** Durable cable, pipe, fixture and asset identification engineered for extreme environments.

### Products:

- BAND-IT® ID tags, COLOR-IT® banding, stainless steel embossing tape, imprint able stainless steel tags, stainless steel characters and carrier strips.
- Pro-Mark™ tag imprinter, custom embossing service, hand held stainless steel tape embosser, bench mountable manual imprinter with indexing template.

### Benefits:

- Functional in Extreme temperatures and UV light exposure
- Long service life
- Proven and controlled materials - 201SS, 304SS, 316SS, Alloy 400 & 625
- Quality certified manufacturing process management – ISO9001 with TS 16949
- COLOR-IT® stainless steel banding
- Emboss, engrave or imprint able



# INTRODUCTION

Manufactured from our plant in Denver, Colorado.



Ultra-Lok® Preformed Clamp

## Ultra-Lok® Clamping System.....5

- Rugged design for the most demanding hose assembly
- Engineered to eliminate leak paths
- Patented lock design
- Installed with electric or cordless power tool

Ideal use in heavy duty suction and discharge applications. Double wrapped 1/4 hard type 201SS for superior strength.



Junior® Smooth ID Clamp

## Junior® Smooth Inside Diameter.....8

- Worlds first smooth ID Permanent Clamping System
- Available in Stainless Steel or Galvanized Carbon Steel
- Applied with the industry's leading bench mounted production tools

Ideal for fluid transfer and multi-purpose hose assemblies. Double wrapped 201 Stainless Steel for superior strength.



Center Punch Clamp

## Center Punch.....11

- Quick & simple installation
- Simple locking design for economical solutions
- Applied with hand tools or pneumatic tool

Ideal for economical field repair hose assemblies and where constant vibration is present. Double wrapped 201 Stainless Steel for superior strength.

**NOTE: Most Clamps Are Available In Alloy 625, Alloy 400, 316SS, 201SS or GCS!**



Hose Fittings

## Hose Fittings.....16

- Engineered barb design to maximize clamp performance
- Available in SS or plated carbon material
- Typical applications: Chemical Plants, Gas, Marine, Ship Yards, Food Processing and General Hose Fastening
- Tri-Lokt® fittings available for maximum holding power



# ULTRA-LOK®

**The Ultimate  
Clamping Solution!**



# ULTRA-LOK® CLAMPING SYSTEM



## Preformed Clamping Systems

Designed for quick installation, highest clamping force and gap-free inside diameter. The best choice for demanding applications!

- Strongest band clamping system available
- Double wrapped 1/4 hard type 201SS for superior strength
- Unique lock formed under full tension maximizing tightness
- Buckle is thicker and 2-3 times stronger than other preformed clamps
- Smooth inside diameter designed to eliminate leak paths
- Buckle hood protects lock from snags
- Install Ultra-Lok® clamping systems quickly using portable power tools



**3/4" Ultra-Lok® Band and Buckle formed to a low profile, tamper proof lock.**



**1/2" Ultra-Lok® Band and Buckles.**



**3/4" Ultra-Lok® Tote with convenient buckle storage.**

# ULTRA-LOK® CLAMPING SYSTEM



Part No.	Material	Width		Thickness		Inside Diameter		Package Weight		Package Quantity
		In	mm	In	mm	In	mm	Lbs	Kg	
<b>Ultra-Lok® Preformed Clamp</b>										
UL2799**	201 SS 1/4 Hard	0.5	12.7	0.030	0.76	1.5	38	9.1	4.1	100/Box
UL2839**	201 SS 1/4 Hard	0.5	12.7	0.030	0.76	2.0	50	10.6	4.8	100/Box
UL2869**	201 SS 1/4 Hard	0.5	12.7	0.030	0.76	2.75	69	12.7	5.8	100/Box
UL2919**	201 SS 1/4 Hard	0.5	12.7	0.030	0.76	4.0	101	16.7	7.6	100/Box
UL2279	201 SS 1/4 Hard	0.75	19.1	0.030	0.76	2.0	50	14.9	6.8	100/Box
UL2109	201 SS 1/4 Hard	0.75	19.1	0.030	0.76	2.75	69	9.2	4.2	50/Box
UL2119	201 SS 1/4 Hard	0.75	19.1	0.030	0.76	3.0	76	10.4	4.7	50/Box
UL2129	201 SS 1/4 Hard	0.75	19.1	0.030	0.76	3.5	88	10.8	4.9	50/Box
UL2139	201 SS 1/4 Hard	0.75	19.1	0.030	0.76	4.0	101	6.4	2.9	25/Box
UL2149	201 SS 1/4 Hard	0.75	19.1	0.030	0.76	4.5	114	7.0	3.2	25/Box
UL2159	201 SS 1/4 Hard	0.75	19.1	0.030	0.76	5.0	127	7.5	3.4	25/Box
UL2709	201 SS 1/4 Hard	0.75	19.1	0.030	0.76	5.25	139	7.3	3.3	25/Box
UL2169	201 SS 1/4 Hard	0.75	19.1	0.030	0.76	6.0	152	8.4	3.8	25/Box
UL2179	201 SS 1/4 Hard	0.75	19.1	0.030	0.76	6.5	165	10.2	4.6	25/Box
UL2189	201 SS 1/4 Hard	0.75	19.1	0.030	0.76	7.0	177	9.8	4.4	25/Box
UL2199	201 SS 1/4 Hard	0.75	19.1	0.030	0.76	8.0	203	11.0	5.0	25/Box
UL2289	201 SS 1/4 Hard	0.75	19.1	0.030	0.76	9.0	228	5.1	2.31	10/Box

\*\*1/2" bands require M09387 for UL4000 or UL9010 tools.



## UL4000-C Ultra-Lok® Cordless Tool

- Ultra-Lok clamps 1/2"\* & 3/4" either preformed or Band and Buckle can be applied
- Locks under full tension
- Adjustable speed and torque
- Consistent, repeatable tensioning
- Ultra-Lok clamps can be applied four times faster than conventional clamps
- Supplied with spare battery and charger with Automatic Battery Tune-Up feature
- Available in 110 or 220 volt power source
- Ideal for field repairs

\* For 1/2" applications, must use M09387 1/2" Shear Plate.

## UL 9010 Electric

### UL 9010 Ultra-Lok® Electric Tool

- Ultra-Lok clamps 1/2" & 3/4" either preformed or Band and Buckle can be applied
- Locks under full tension
- Adjustable speed and torque
- Consistent, repeatable tensioning
- Ideal for production and large diameter hose clamping
- No roll up required

# BAND-IT JR<sup>®</sup> SMOOTH ID



## Preformed Clamping Systems

Widest choice of sizes and materials in a leak resistant design.

- Vibration resistant lip lock design. No hammering or crimping
- Unique buckle nest and smooth ID design reduces leak paths
- Double wrapped steel bands for additional strength
- Various materials for different corrosive environments
- Install BAND-IT Jr Smooth ID preformed clamps using the C00269, S35099, S75099 C00169 Banding Tool with Junior adapters: J00169, J05069
- Band widths - 1/4", 3/8", 1/2", 5/8" and 3/4"
- Available for hose assemblies up to 8" outside diameter



Inside Diameter





# BAND-IT JR<sup>®</sup> SMOOTH ID

## Preformed Clamping Systems

Widest choice of sizes and materials in a leak resistant design.

### Protective Slewing



Suggested Band Clamp Widths, Rollover Style:	Clamp Band Width
Hose ID	
Use with Juniors & Junior Smooth Clamps	
<1/2"	3/8"
1/2" - 3/4"	1/2"
3/4" - 2"	5/8"
>2"	3/4"

Tools to be used with this product:  
**C00169, C00269, J00169, J05069, S35099, S75099.**

For a complete line of tools, please see pages 18-19.

### Fluid Transfer



### Fitting Attachment



201 SS* Part No.	316 SS* Part No.	GCS SS* Part No.	Width		Thickness		Inside Diameter		Package Weight		Package Quantity
			In	mm	In	mm	In	mm	Lbs	Kg	
<b>BAND-IT<sup>®</sup> Junior<sup>®</sup> Smooth ID Clamp</b>											
JS2409	NA	NA	.25	6.4	0.020	0.51	0.8125	20	2.0	0.9	100/Box
JS2429	NA	NA	.25	6.4	0.020	0.51	1.0	25	2.1	1.0	100/Box
JS2419	NA	NA	.25	6.4	0.020	0.51	1.375	34	2.5	1.1	100/Box
JS2529	NA	NA	.25	6.4	0.020	0.51	1.5	38	2.6	1.2	100/Box
JS2539	NA	NA	.25	6.4	0.020	0.51	2.0	50	3.2	1.5	100/Box
JS2209	NA	NA	.25	6.4	0.020	0.51	2.5	63	3.7	1.7	100/Box
JS2569	NA	NA	.25	6.4	0.020	0.51	2.75	69	3.8	1.7	100/Box
JS2449	NA	NA	.25	6.4	0.020	0.51	3	76	4.2	1.9	100/Box
JS2579	NA	NA	.25	6.4	0.020	0.51	3.5	88	4.6	2.1	100/Box
JS2589	NA	NA	.25	6.4	0.020	0.51	4.0	101	5.3	2.4	100/Box
JS2599	NA	NA	.25	6.4	0.020	0.51	4.5	114	5.7	2.6	100/Box
JS2019	JS4019	JS3019	.375	9.6	0.025	0.64	0.8125	20	3.6	1.6	100/Box
JS2439	NA	JS3439	.375	9.6	0.025	0.64	1.0	25	3.9	1.8	100/Box
JS2029	JS4029	JS3029	.375	9.6	0.025	0.64	1.375	34	5.0	2.3	100/Box
JS2459	JS4459	JS3459	.375	9.6	0.025	0.64	2.0	50	5.9	2.7	100/Box
JS2219	JS4219	JS3219	.375	9.6	0.025	0.64	2.5	63	6.8	3.1	100/Box
JS2469	NA	JS3469	.375	9.6	0.025	0.64	3.0	76	7.5	3.4	100/Box
JS2559	JS4559	JS3559	.375	9.6	0.025	0.64	3.5	88	8.6	3.9	100/Box
JS2489	JS4489	JS3489	.375	9.6	0.025	0.64	4.0	101	9.5	4.3	100/Box
JS2039	JS4039	JS3039	.5	12.7	0.030	0.76	1.0	25	6.5	3.0	100/Box
JS2049	JS4049	JS3049	.5	12.7	0.030	0.76	1.25	31	7.2	3.3	100/Box
JS2319	NA	JS3319	.5	12.7	0.030	0.76	1.5	38	8.1	3.7	100/Box
JS2369	NA	JS3369	.5	12.7	0.030	0.76	1.75	44	8.7	4.0	100/Box
JS2379	JS4379	JS3379	.5	12.7	0.030	0.76	2.0	50	9.4	4.3	100/Box
JS2339	JS4339	JS3339	.5	12.7	0.030	0.76	2.5	63	10.8	4.9	100/Box
JS2309	NA	JS3309	.5	12.7	0.030	0.76	2.75	69	11.3	5.1	100/Box
JS2349	JS4349	JS3349	.5	12.7	0.030	0.76	3.0	76	12.2	5.5	100/Box
JS2479	JS4479	JS3479	.5	12.7	0.030	0.76	3.5	88	13.6	6.2	100/Box
JS2499	JS4499	JS3499	.5	12.7	0.030	0.76	4.0	101	14.9	6.8	100/Box
JS2059	JS4059	JS3059	.625	15.9	0.030	0.76	1.5	38	10.4	4.7	100/Box
JS2069	JS4069	JS3069	.625	15.9	0.030	0.76	1.75	44	11.3	5.1	100/Box
JS2079	JS4079	JS3079	.625	15.9	0.030	0.76	2.0	50	12.2	5.5	100/Box
JS2089	JS4089	JS3089	.625	15.9	0.030	0.76	2.25	57	13.3	6.0	100/Box
JS2099	JS4099	JS3099	.625	15.9	0.030	0.76	2.5	63	13.9	6.3	100/Box
JS2279	JS4279	JS3279	.75	19.1	0.030	0.76	2.0	50	14.9	6.8	100/Box
JS2109	JS4109	JS3109	.75	19.1	0.030	0.76	2.75	69	9.2	4.2	50/Box
JS2119	JS4119	JS3119	.75	19.1	0.030	0.76	3.0	76	9.7	4.4	50/Box
JS2129	JS4129	JS3129	.75	19.1	0.030	0.76	3.5	88	10.8	4.9	50/Box
JS2139	JS4139	JS3139	.75	19.1	0.030	0.76	4.0	101	6.1	2.8	25/Box
JS2149	JS4149	JS3149	.75	19.1	0.030	0.76	4.5	114	6.7	3.0	25/Box
JS2159	JS4159	JS3159	.75	19.1	0.030	0.76	5.0	127	7.2	3.3	25/Box
JS2709	JS4709	JS3709	.75	19.1	0.030	0.76	5.25	133	7.3	3.3	25/Box
JS2169	JS4169	JS3169	.75	19.1	0.030	0.76	6.0	152	8.2	3.7	25/Box
JS2179	JS4179	JS3179	.75	19.1	0.030	0.76	6.5	165	9.2	4.2	25/Box
JS2189	NA	JS3189	.75	19.1	0.030	0.76	7.0	177	10.2	4.6	25/Box
JS2199	NA	JS3199	.75	19.1	0.030	0.76	8.0	203	11.0	5.0	25/Box

\*\* Junior<sup>®</sup> Adaptors, either J00169 or J05069, must be used with C00169



# Engineered Clamping Solutions!





# CENTER PUNCH CLAMPS

## Preformed Clamping Systems

Designed to meet your specific application requirement.



- Lock with impact from a hammer using a conical punch designed into the tool
- Double wrapped steel bands using 201 Stainless Steel or galvanized carbon steel
- Manufactured with 201 Stainless Steel buckles to provide added locking strength
- Not recommended for use with fittings that may crack as a result of impact or poly fittings
- Install 3/8" and 5/8" width Center Punch clamping systems with the following hand tools: S03869, T30069. The SM1700 Pneumatic Production Tool installs 5/8" clamps without the typical roll up action

Tools to be used with this product, please see pages 18-19.



SS Part No.	Width		Thickness		Length**		Inside Diameter Single Wrap		Inside Diameter Double Wrap		Pkg Qty
	In	mm	In	mm	In	mm	In	mm	In	mm	
<b>BAND-FAST® Open End with Center Punch Clip</b>											
O311S9	3/8	9.6	0.020	0.51	15.0	381	2.75	70	1.375	35	100/Box
O316S9	3/8	9.6	0.020	0.51	18.0	457	4	101	2	50	100/Box
O325S9	3/8	9.6	0.020	0.51	24.0	610	6	152	3	76	100/Box
O10S99	5/8	15.9	0.020	0.51	23.0	584	5	127	2.5	64	50/Box
O16S99	5/8	15.9	0.020	0.51	31.0	787	8	203	4	102	50/Box
O20S99	5/8	15.9	0.020	0.51	37.0	940	10	254	5	127	25/Box
O32S99	5/8	15.9	0.020	0.51	56.0	1422	16	406	8	203	25/Box

\*\* Take the object circumference and add 4" to grip with the tool (2 X circumference for double wrap).

### BAND-FAST® Open End with Center Punch Clip

201 SS* Part No.	GCS SS* Part No.	Width		Thickness		Inside Diameter		Package Weight		Package Quantity
		In	mm	In	mm	In	mm	Lbs	Kg	
<b>Center Punch Clamp</b>										
CP3S99	CP0399	.375	9.6	0.025	0.64	.8125	20	3.6	1.6	100/Box
CP311S	CP3119	.375	9.6	0.025	0.64	1.375	35	4.6	2.1	100/Box
CP4S99	CP0499	.625	15.9	0.025	0.64	1.0	25	8.3	3.8	100/Box
CP5S99	CP0599	.625	15.9	0.025	0.64	1.25	32	8.7	4.0	100/Box
CP6S99	CP0699	.625	15.9	0.025	0.64	1.5	38	9.7	4.4	100/Box
CP7S99	CP0799	.625	15.9	0.025	0.64	1.75	44	10.6	4.8	100/Box
CP8S99	CP0899	.625	15.9	0.025	0.64	2.0	51	11.5	5.2	100/Box
CP9S99	CP0999	.625	15.9	0.025	0.64	2.25	57	12.6	5.7	100/Box
CP10S9	CP1099	.625	15.9	0.025	0.64	2.5	64	6.8	3.1	50/Box
CP11S9	CP1199	.625	15.9	0.025	0.64	2.75	70	7.3	3.3	50/Box
CP12S9	CP1299	.625	15.9	0.025	0.64	3.0	76	7.7	3.5	50/Box
CP14S9	CP1499	.625	15.9	0.025	0.64	3.5	89	8.7	4.0	50/Box
CP16S9	CP1699	.625	15.9	0.025	0.64	4.0	102	4.9	2.2	25/Box
CP18S9	CP1899	.625	15.9	0.025	0.64	4.5	114	5.5	2.5	25/Box
CP20S9	CP2099	.625	15.9	0.025	0.64	5.0	127	5.9	2.7	25/Box
CP24S9	CP2499	.625	15.9	0.025	0.64	6.0	152	6.8	3.1	25/Box
CP26S9	CP2699	.625	15.9	0.025	0.64	6.5	165	7.1	3.3	25/Box
CP28S9	CP2899	.625	15.9	0.025	0.64	7.0	178	7.4	3.4	25/Box
CP32S9	CP3299	.625	15.9	0.025	0.64	8.0	203	8.2	3.7	25/Box



# ADJUSTABLE CLAMPING SYSTEMS

## Worm Gear Clamps



301SS Part No.	Width		Thickness		Inside Diameter Min		Inside Diameter Max		Package Weight		Package Quantity
	In	mm	In	mm	In	mm	In	mm	Lbs	Kg	
<b>Worm Gear Clamps</b>											
V20299	.312	7.9	.021	0.58	0.22	6	0.63	16	0.51	0.26	10/Box
V20399	.312	7.9	.021	0.58	0.31	8	0.88	22	0.60	0.27	10/Box
V00699	.562	14.2	0.23	0.58	0.37	10	0.87	22	0.52	0.23	10/Box
V00899	.562	14.2	0.23	0.58	0.43	11	1.00	25	0.52	0.23	10/Box
V01099	.562	14.2	0.23	0.58	0.50	13	1.12	28	0.54	0.24	10/Box
V01299	.562	14.2	0.23	0.58	0.50	13	1.25	32	0.55	0.25	10/Box
V01699	.562	14.2	0.23	0.58	0.75	19	1.50	38	0.60	0.27	10/Box
V02099	.562	14.2	0.23	0.58	0.87	22	1.75	44	0.65	0.29	10/Box
V02499	.562	14.2	0.23	0.58	1.12	28	2.00	51	0.65	0.29	10/Box
V02899	.562	14.2	0.23	0.58	1.12	28	2.25	57	0.70	0.32	10/Box
V03299	.562	14.2	0.23	0.58	1.62	41	2.50	64	0.73	0.33	10/Box
V03699	.562	14.2	0.23	0.58	1.87	48	2.75	70	0.80	0.36	10/Box
V04099	.562	14.2	0.23	0.58	2.12	54	3.00	76	0.80	0.36	10/Box
V04499	.562	14.2	0.23	0.58	2.31	59	3.25	83	0.84	0.38	10/Box
V04899	.562	14.2	0.23	0.58	2.62	67	3.50	89	0.85	0.38	10/Box
V05299	.562	14.2	0.23	0.58	2.87	73	3.75	95	0.90	0.40	10/Box
V05699	.562	14.2	0.23	0.58	3.12	79	4.00	102	0.91	0.40	10/Box
V06499	.562	14.2	0.23	0.58	3.50	89	4.50	114	1.24	0.56	10/Box
V07299	.562	14.2	0.23	0.58	4.00	102	5.00	127	1.30	0.59	10/Box
V08099	.562	14.2	0.23	0.58	4.50	114	5.50	140	1.36	0.61	10/Box
V08899	.562	14.2	0.23	0.58	5.12	130	6.00	152	1.40	0.63	10/Box
V10499	.562	14.2	0.23	0.58	6.12	156	7.00	178	1.51	0.68	10/Box

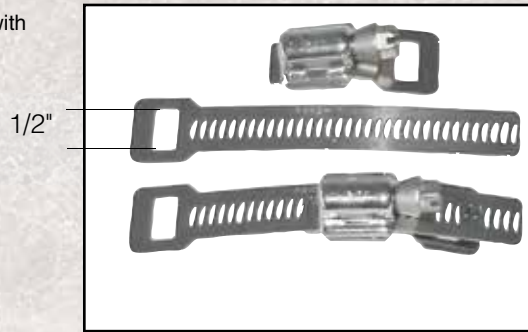
## Scru-Seal Clamping Systems

Designed for medium duty application.

For a complete line of adjustable clamping systems, visit our website: [www.band-it-idex.com](http://www.band-it-idex.com).



M21899 Clamp-Pak



Scru-Seal Rack and Housing



Scru-Seal Application

## Scru-Band Clamping Systems

Designed for light duty application.



M15899 Scru-Band Kit



Scru-Band Rack and Housing



Scru-Band Clamping System

# Pro-Mark™ LCD Pin Marker & Pro-Mark™ USB Pin Marker



- Programmable Marking
- Component Identification
- Component Traceability
- Serial Numbering
- Logo Marketing
- Label and Tag Marking
- Part Numbering
- Batch and Shift Coding



Pro-Mark™ USB Pin Marker



Pro-Mark™ LCD Pin Marker

## USB Plug and Play with Windows compatible Software.

Easy to use, on-screen creation of marking layouts using simple drag and drop graphical interface. Layouts can be rapidly created and checked before marking.

## Technical Specifications

- Marking Area: 4" (100mm) x 3" (75mm)
- Standard Character Sizes: 0.18mm - 99.9mm in increments of 0.18mm
- Marking Formed: 5 x 7, 7 x 9, Varidot, all Windows True Type fonts\*, DXF, HPGL
- Min PC Req: 1GHz Pentium or equivalent with USB port\*
- Power Supply: 220V, 50Hz, 110V 60Hz
- Operating System: Windows 2000, Windows XP, Windows Vista\*

\* Applies only to Pro-Mark™ USB Pin Marker

## Tag Example



## Workshop Pin Marking Machine

A bench mounted, fully programmable pin marking machine in a low cost simple to use package. Uncompromising build quality ensures the stand alone variable marking system is robust enough for the toughest workshop environments. Operates on standard 110V power (220V available). No air required.

(Required fixture sold separately)

Part No.	Description	Package Weight
PM1000LCD-P	Bench mounted, standalone pin marking LCD machine	28lbs
PM1000LCD-C	LCD controller for PM1000LCD-P (REQUIRED)	16lbs
PM1000USB	Bench mounted, standalone pin marking machine with USB plug and play PC compatibility	28lbs



# IDENTIFICATION SYSTEMS



## ID Tag Imprinter Tool

### Optional Letter Dial Kits

### Tool Accessories

### ID Guide Accessory

### ID Tags

(Custom embossed tags available with 1/8" lettering only)

## ID Tag Imprinter Tool

Part No.	Tool supplied with:
ID2006	3/32" character wheel
ID2026	1/16" character wheel
ID2036	1/8" character wheel
ID2046	3/16" character wheel
ID2056	1/4" character wheel

## Optional Letter Dial Kits

Part No.	Kit supplied with:
ID2816	1/16" character wheel
ID2826	1/8" character wheel
ID2836	3/16" character wheel
ID2846	1/4" character wheel
ID2906	3/32" character wheel

ID2859 Guide Accessory: Allows imprinting on SS Bands up to 3/4" X 0.030".

## A92079 Tie-Lok® II Tool



Use with 1/4" wide (6.35mm) Tie-Lok® Ties to apply ID tags.

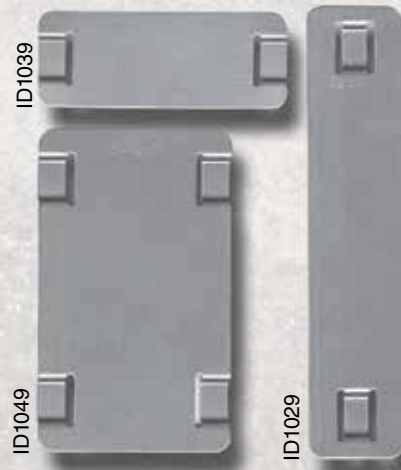
## Embossed Tags



## COLOR-IT®



## ID Kit - ID3009



## ID Tags

Part No.	Description
ID1009	304SS 0.75" X 2" X 0.015" - 100/BX
ID1019	304SS 1.5" X 2.5" X 0.015" - 100/BX
ID1029	304SS 0.75" X 3.5" X 0.015" - 100/BX
ID1039	304SS 0.75" X 2" X 0.015" - 1 EA Custom Embossed
ID1049	304SS 1.5" X 2.5" X 0.015" - 1 EA Custom Embossed
ID1059	304SS 0.75" X 3.5" X 0.015" - 1 EA Custom Embossed
ID4409	316SS 0.75" X 2" X 0.010" - 100/BX
ID4419	316SS 1.5" X 2.5" X 0.015" - 100/BX
ID4429	316SS 0.75" X 3.5" X 0.015" - 100/BX
ID4609	316SS 0.75" X 2" X 0.010" - 1 EA Custom Embossed
ID4619	316SS 1.5" X 2.5" X 0.015" - 1 EA Custom Embossed
ID4629	316SS 0.75" X 3.5" X 0.015" - 1 EA Custom Embossed

The BAND-IT ID Kit comes with an assortment of blank ID tags to use with the ID Tagging Systems. Includes various Tie-Lok Ties and Tie-Lok tool to fasten tags to items. Total weight is 22.7 lbs, 10.3 Kg.



# EASY READ IDENTIFICATION

EASY READ characters slide onto any 3/8" tie and any 3/8" width band.

- BAND-IT EASY READ letters, numbers and symbols made from type 316SS
- Easy to read in dim light and inaccessible places
- Slide directly onto cable ties to create a self-contained wrap tag
- Characters sold individually in bags of 100 pcs
- Contact BAND-IT® for availability



AE0609-100  
EASY READ KIT

The kit comes in a convenient carrying case and contains an assortment of EASY READ Carriers and Easy Strips.



## Apply EASY READ Characters with these ties:

- Tie-Lok® Ties
- BAND-IT® Ties
- Ball-Lok Ties
- Ball-Lokt™ Ties
- Multi-Lok Ties
- 3/8" width band
- PPA Coated Band

### Easy Read on Strips



### Easy Read on Ties



### Easy Read Strips



# STAINLESS STEEL TAPE EMBOSSED SYSTEM

## ID4002 Stainless Steel Tape Embossing System

With the portable tape embossing tool and a roll of 304 stainless steel tape, you can quickly and easily produce I.D. tags with 3/16" letter size which can be attached with your choice of BAND-IT® ties.

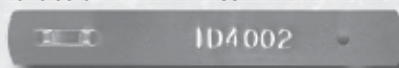
Replacement Rolls: ID4059 - 1/2" X 21' - 2 pack.



ID4002  
SS Embossing System



Slot used with your choice of BAND-IT® Ties.



Hole used with wire ties.

## Stainless Steel Tape





# ***Engineered for safety and maximum holding power!***





# HOSE FITTINGS



**Menders**

## Engineered Hose Fittings

### Machined Hose Menders:

Plated, machined carbon steel Hose Menders are used to repair damaged, leaking hose assemblies quickly and easily when used along with BAND-IT® preformed clamps. The short length of these hose menders makes them particularly suitable for use on hose reels.



**Nipples**



### Machined and Swaged Steel Nipples:

- Available in two styles: Machined and Swaged steel design
- Available in two materials: Type 316 Stainless Steel and Plated Carbon Steel

Both designs provide superior sealing characteristics, maximum flow, low profile and superior performance when used with BAND-IT® preformed clamping systems. Both designs are constructed with National Pipe Threads. BAND-IT's swaged hose nipple design incorporates a unique hose shank design with longer length and a larger rib or barb design providing superior holding power as compared to other king or combination designs. BAND-IT's superior swaged nipple quality means you get a hose assembly you can rely upon.



**Tri-Lokt®**

### Machined, Swaged and Hardened Tri-Lokt® Fittings:

- Available in 3 styles: Machined, Swaged and hardened full flow plated steel designs
- Available in two materials: Type 316 Stainless Steel and Plated Carbon Steel

BAND-IT's exclusive design of the Tri-Lokt® hose nipple is the answer for heavy duty industrial hose applications. This Tri-lokt® nipple design should be used when a positive lock is required between the clamp and the nipple. The locking yoke or tie-strip assembly together with the BAND-IT® clamp accommodates the various wall thicknesses of different types of hoses.



## HAND TOOLS

### C00269 Junior® Preformed Clamp Tool



#### Use with

*BAND-IT® Junior® Smooth ID Preformed Clamps*

#### Preassembled Junior® Tool

Use to apply Junior® Preformed clamps and BAND-IT® Junior® Smooth ID Clamps. Tool performs best when used in a vice on band widths over 1/2".

### C00169 Standard Banding Tool



#### Use with

*Junior Adapters Below*

BAND-IT's standard tool with an adapter built in for Junior® Smooth ID clamps. For use on band widths of 1/4" to 3/4". Comes with a spin handle retaining ring to keep parts intact.

- Tensions over 2,400 lbs of force
- Used to apply BAND-IT® Stainless Steel Band, Galvanized Carbon Steel Band, BAND-FAST®, general use band and miscellaneous strapping
- Drop forged tool with built in cutter
- Spring loaded gripper lever improves ease of use
- Blue powder coated finish resists corrosive elements

### J05069 Junior® Heavy Duty Adapter



#### Use with

*BAND-IT® Tool on the BAND-IT® Junior® Smooth ID Preformed Clamps*

Used only with the C00169 BAND-IT® Tool to install Junior® Smooth I.D. Preformed Clamps for hose assembly when a vise is not available.

### J00169 Junior® Clamp Adapter



#### Use with

*BAND-IT® Tool on the BAND-IT® Junior® Smooth ID Preformed Clamps*

### T30069 Center Punch Tool



Used to apply BAND-IT® 3/8" and 5/8", 201 Stainless Steel Band and Galvanized Carbon Steel clamps.



## POWER TOOLS



### Use with

ULTRA-LOK® Bands only

### S75099 Pneumatic Junior® Clamp Application Tool



### Use with

BAND-IT® Junior® Smooth ID Preformed Clamps

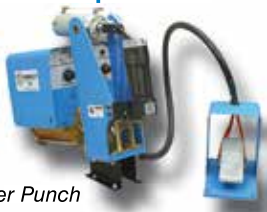
### S35099 Pneumatic Junior® Clamp Automatic Air Tool



### Use with

BAND-IT® Junior® Smooth ID Preformed Clamps

### SM1700 Pneumatic Automatic Center Punch Clamp Air Tool



### Use with

BAND-IT® Center Punch Preformed Clamps

### IT Series Tool



### Use with

BAND-IT® Tie-Lok® Ties, and Junior® Smooth ID Preformed Clamps

### UL9010 ULTRA-LOK® Corded Tool

Ideal for hose clamping. Electric ULTRA-LOK® Tool clamps 3/4" or 1/2" ULTRA-LOK® band and ULTRA-LOK® preformed clamps. Designed for consistent repeatable tensioning. Adjustable speed and torque. Clamps can be applied four times faster than conventional clamps. Forms lock under full tension. Shear plate available to convert tool from 3/4" to 1/2" ULTRA-LOK® clamps.

### UL4000C ULTRA-LOK® Cordless Tool

Now powered with a Lithium-ion battery, with longer charge and battery life, the UL4000C battery charge lasts longer with consistent peak performance through the life of the battery. ULTRA-LOK® band and buckle system,

The "Standard Air Tool"! The foot controlled standard air tool applies the complete range of BAND-IT Junior® and Junior® Smooth ID preformed clamps.

For high volume production clamping of all widths and diameter sizes of BAND-IT Junior® Smooth ID and Junior® preformed clamps. Automatically tensions and cuts off clamp tail after roll-up and lock. Cycle time is approximately 8 seconds.

Designed to install BAND-IT® Center Punch 5/8" wide preformed clamps, made from 201 Stainless Steel and Galvanized Carbon Steel. Automatically tensions and cuts off clamp tail.

The IT Series Tool (with air hose and regulator) is a hand held tool used for repeatable high production environments.

Available Versions

- .177 (4.5mm) Mini Tie-Lok
- .250 (6.35mm) Tie-Lok®
- .375 (9.53mm) Tie-Lok®
- Universal Preformed Clamps
- Junior® Smooth ID Clamps

**BAND-IT® Metals Data** All values in table are reference only.

Material	201 Stainless Steel	201 1/4 Hard	202 Stainless Steel	301 Stainless Steel	302 Stainless Steel	304 Stainless Steel	316 Stainless Steel	317L 1/4 Hard Stainless Steel	321 Stainless Steel	200/300 Series Stainless Steel	Alloy 400	Alloy 625	Titanium GR1
Specification													
UNS Designation	S20100	S20100	S20200	S30100	S30200	S30400	S31600	S31703	S32100	---	N04400	N06625	R50250
ASTM	A 666	A 666	A 666	A 666	A 666	A 666	A 666	A 240	A 240	---	B 127	B 443	B 265
Principal Alloying Elements, %													
C	.015 Max	.015 Max	.015 Max	.15 Max	.15 Max	.08 Max	.08 Max	.03 Max	.08 Max	---	.3 Max	.10 Max	.08 Max
Mn	5.50 - 7.50	5.50 - 7.50	7.5-10.0	2.0 Max	2.0 Max	2.0 Max	2.0 Max	2.0 Max	2.0 Max	---	2.0 Max	.50 Max	---
P	.06 Max	.06 Max	.06 Max	.045 Max	.045 Max	.045 Max	.045 Max	.045 Max	.045 Max	---	---	.015 Max	---
S	.03 Max	.03 Max	.03 Max	.030 Max	.030 Max	.030 Max	.030 Max	.030 Max	.030 Max	---	0.024 Max	.015 Max	---
Si	.75 Max	.75 Max	.75 Max	1.00 Max	.75 Max	.75 Max	.75 Max	.75 Max	.75 Max	---	0.5 Max	50 Max	---
Cr	16.0-18.0	16.0-18.0	17.0-19.0	16.0-18.0	17.0-19.0	18.0-20.0	16.0-18.0	18.0-20.0	17.0-19.0	---	---	20.0-23.0	---
Ni	3.50-5.50	3.50-5.50	4.0-6.0	6.0-8.0	8.0-10.0	8.0-10.5	10.0-14.0	11.0-15.0	9.0-12.0	---	63.0 Min	58.0 Min	---
N	.25 Max	.25 Max	.25 Max	.10 Max	---	.10 Max	---	.10 Max	.10 Max	---	---	---	.03 Max
O	---	---	---	---	---	---	---	---	---	---	---	---	.18 Max
H	---	---	---	---	---	---	---	---	---	---	---	---	.015 Max
Mo	---	---	---	---	---	---	2.0-3.0	3.0-4.0	---	---	---	8.0-10.0	---
Cu	---	---	---	---	---	---	---	---	---	---	28.0-34.0	---	---
Fe	---	---	---	---	---	---	---	---	---	---	2.5 Max	5.0 Max	.20 Max
Ti	---	---	---	---	---	---	---	---	---	---	---	0.40 Max	Balance
Zn	---	---	---	---	---	---	---	---	---	---	---	0.40 Max	Balance
Al	---	---	---	---	---	---	---	---	---	---	---	---	---
Physical Properties													
Density, Lb/Cu. In.	0.287	0.287	0.287	0.290	0.290	0.290	0.290	0.290	0.286	0.287	0.319	0.305	0.163
Structure	Austenitic	Austenitic	Austenitic	Austenitic	Austenitic	Austenitic	Austenitic	Austenitic	---	Austenitic	---	---	Alpha
Melting Range	2550 - 2650°F	2550-2650°F	2550-2650°F	2550-2590°F	2550-2590°F	2550-2590°F	2540 - 2630°F	2540 - 2630°F	2550 - 2635°F	2550-2650°F	2370-2460°F	2500 - 2550°F	2500 - 2550°F
Electrical Properties	Non-Magnetic	Non-Magnetic	Non-Magnetic	Non-Magnetic	Non-Magnetic	Non-Magnetic	Non-Magnetic	Non-Magnetic	Non-Magnetic	Non-Magnetic	Slightly Magnetic	Non-Magnetic	Non-Magnetic
Mechanical Properties													
Rockwell Hardness	100 Rb Max	---	100 Rb Max	95 Rb Max	92 Rb Max	92 Rb Max	95 Rb Max	95 Rb Max	95 Rb Min	70-95Rb	68 Rb Max	88-94Rb	64-70Rb
Ultimate Tensile Strength	95,000	125,000	90,000	75,000	75,000	75,000	75,000	115,000	75,000	75,000	70,000	120,000	35,000
Yield Strength	45,000	75,000	38,000	30,000	30,000	30,000	40,000	75,000	30,000	30,000	28,000	60,000	20,000
% of Elongation in 2 inches, Min	40	25	40	40	40	40	35	10	40	30	35	30	24
Corrosion Resistance													
Mild Atmospheric and Fresh Water	Good	Good	Good	Good	Very Good	Very Good	Excellent	Excellent	Excellent	Good	Good	Good	Good
Industrial Atmosphere	Good	Good	Good	Good	Very Good	Very Good	Very Good	Very Good	Very Good	Good	Good	Good	Good
Marine Atmosphere	Fair	Fair	Fair	Fair	Good	Good	Very Good	Very Good	Very Good	Fair	Excellent	Excellent	Good
Salt Water	No	No	No	No	No	No	Good	Good	Good	No	Excellent	Excellent	Good
Mild Chemical	Fair	Fair	Fair	Fair	Good	Good	Good	Very Good	Good	Fair	Good	Good	Good
Oxidizing Chemical	Fair	Fair	Fair	Fair	Good	Good	Good	Good	Good	Fair	Good	Good	Excellent
Reducing Chemical	No	No	No	No	No	No	Good	Good	Good	No	Good	Good	Fair

**BAND-IT® Metals Data** All values in table are reference only.

	Titanium GR2	Galvanized Carbon Steel	403 Stainless Steel	Carbon Steel (Magnus)	AL2003	Aluminum 3003	Alloy 27-7	Alloy AL6XN®	Alloy C276	Alloy 2507	UNS S32760	Alloy 2205	Alloy 718	409 Stainless Steel	430 Stainless Steel
	R50400	---	S40300	---	S32003	A93003	S31277	N08367	N10276	S32750	S32760	S32205	N07718	S40900	S43000
	B 265	A 105, A 695	A 176	---	A 240	B 209	A 240	B 688	B 462	A 240	A 240	A 240	B 637	A-240	A-240
	.08 Max	.35 Max	.15 Max	---	.03 Max	---	.5-1.5	.03 Max	.01 Max	.03 Max	.03 Max	.03 Max	.08 Max	.03 Max	0.12 Max
	---	.6-1.05	1.0 Max	---	2.0 Max	1.0-1.5	3.0 Max	---	1.0 Max	1.2 Max	1.0 Max	2.0 Max	.35 Max	1.0 Max	1.00 Max
	---	.04 Max	.04 Max	---	.03 Max	---	.03 Max	.04 Max	.04 Max	0.035 Max	0.03 Max	0.03 Max	.015 Max	0.04 Max	.04 Max
	---	.05 Max	.03 Max	---	.02 Max	---	.01 Max	.03 Max	.03 Max	0.02 Max	0.01 Max	0.02 Max	.015 Max	0.02 Max	.03 Max
	---	.10-.35	.50 Max	---	1.0 Max	.60 Max	.50 Max	1.0 Max	.08 Max	.80 Max	1.00 Max	1.00 Max	.35 Max	1.00 Max	1.00 Max
	---	---	11.5-13.0	---	19.5-22.5	---	20.5-23.0	20.0-22.0	14.5-16.5	24-26.0	24.0-26.0	22.0-23.0	17.0-21.0	10.50-11.75	16.0-18.0
	---	---	.60 Max	---	3.0-4.0	---	26.0-28.0	23.5-25.5	Balance	6.0-8.0	6.0-8.0	4.5-6.5	50.0-55.0	0.5 Max	.75 Max
	.03 Max	---	---	---	.14-.20	---	.3-.4	.18-.25	---	.24-.32	.20-.30	.14-.20	---	---	---
	0.25 Max	---	---	---	---	---	---	---	---	---	---	---	---	---	---
	.015 Max	---	---	---	---	---	---	---	---	---	---	---	---	---	---
	---	---	---	---	1.5-2.0	---	---	6.0-7.0	15.0-17.0	3.0-4.0	3.0-4.0	3.0-3.5	2.8-3.3	---	---
	---	---	---	---	---	.20 Max	---	.75 Max	---	---	---	---	---	---	---
	.30 Max	---	---	---	Balance	.70 Max	Balance	---	4.0-7.0	---	---	---	Balance	---	---
	Balance	---	---	---	---	---	---	---	---	---	---	---	.65-1.15	---	---
	Balance	---	---	---	---	.10 Max	---	---	---	---	---	---	---	---	---
	---	---	---	---	---	Balance	---	---	---	---	---	---	.2-.8	---	---
	0.163	0.283	0.282	---	0.279	0.099	0.290	0.291	0.321	0.282	0.278	0.282	0.296	0.282	0.282
	Alpha	Ferritic	Martensitic	Ferritic	Duplex	---	Austenitic	Austenitic	Duplex	Duplex	Duplex	Duplex	Duplex	Ferritic	Ferritic
	2500 - 2550°F	---	2720	---	---	1190	---	2500 - 2550°F	---	---	---	---	2200-2450	2500-2550	2500-2550
	Non-Magnetic	Magnetic	Ferromagnetic	Magnetic	Ferromagnetic	---	---	---	---	---	---	---	---	---	Magnetic
	64-70Rb	80-95Rb	96 Rb Max	---	31 Rc Max	40 Brinell	90 Rb Typ	100 Rb Max	---	32 Rc Max	290 HB max	31 Rc max	109 Rb Min	88 Rb Max	89 Rb Max
	50,000	84,000	70,000	152,500	100,000	22,000	112,000	100,000	100,000	116,000	108,000	95,000	185,000	55,000	65,000
	40,000	80,000	30,000	---	70,000	21,000	52,000	45,000	41,000	80,000	80,000	65,000	150,000	25,000	30,000
	20	5	25	---	25	8	40	30	40	15	25	25	12	20	22
	Good	Good/Fair	Good	Fair/Poor	Excellent	---	Very Good	Good	Very Good	Very Good	Very Good	Excellent	Good	Good	Good
	Good	Fair	Good	Fair	Very Good	Good	Excellent	Good	Excellent	Very Good	Very Good	Very Good	Good	Good	Good
	Good	Poor	Poor	Poor	Very Good	Good	Excellent	Excellent	Excellent	Very Good	Very Good	Very Good	Excellent	Poor	Poor
	Good	No	No	No	Good	---	Excellent	Excellent	Excellent	Very Good	Very Good	Very Good	Excellent	No	No
	Good	No	Fair	No	Good	---	Good	Good	Good	Good	Good	Good	Good	Fair	Fair
	Excellent	No	Fair	No	Good	---	Good	Good	Good	Good	Good	Good	Good	Fair	Fair
	Fair	No	Fair	No	Good	---	Good	Good	Good	Good	Good	Good	Good	Good	No



# INDEX

<b>Part No.</b>	<b>Page</b>	<b>Part No.</b>	<b>Page</b>	<b>Part No.</b>	<b>Page</b>	<b>Part No.</b>	<b>Page</b>
A92079.....	20	ID2826.....	14	JS2209.....	9	O316S9.....	11
AE4259.....	10	ID2836.....	14	JS2219.....	9	O325S9.....	11
AE0609.....	15	ID2846.....	14	JS2279.....	9	O32S99.....	11
C00169.....	18	ID2859.....	14	JS2309.....	9	PM1000LCD-C.....	13
C00269.....	18	ID2906.....	14	JS2319.....	9	PM1000LCD-P.....	13
CP10S9.....	11	ID3009.....	14	JS2339.....	9	PM1000USB.....	13
CP11S9.....	11	ID4002.....	15	JS2349.....	9	SM1700.....	19
CP12S9.....	11	ID4409.....	14	JS2369.....	9	S35099.....	19
CP14S9.....	11	ID4419.....	14	JS2379.....	9	T30069.....	18
CP16S9.....	11	ID4429.....	14	JS2409.....	9	UL2109.....	7
CP18S9.....	11	ID4609.....	14	JS2419.....	9	UL2119.....	7
CP20S9.....	11	ID4619.....	14	JS2429.....	9	UL2129.....	7
CP24S9.....	11	ID4629.....	14	JS2439.....	9	UL2139.....	7
CP26S9.....	11	ITSeriesTool.....	19	JS2449.....	9	UL2149.....	7
CP28S9.....	11	J05069.....	18	JS2459.....	9	UL2159.....	7
CP3S99.....	11	J00169.....	18	JS2469.....	9	UL2169.....	7
CP311S.....	11	J00169.....	18	JS2479.....	9	UL2179.....	7
CP32S9.....	11	JS2019.....	9	JS2489.....	9	UL2189.....	7
CP4S99.....	11	JS2029.....	9	JS2499.....	9	UL2199.....	7
CP5S99.....	11	JS2039.....	9	JS2529.....	9	UL2279.....	7
CP6S99.....	11	JS2049.....	9	JS2539.....	9	UL2289.....	7
CP7S99.....	11	JS2059.....	9	JS2559.....	9	UL2709.....	7
CP8S99.....	11	JS2069.....	9	JS2569.....	9	UL2799.....	7
CP9S99.....	11	JS2079.....	9	JS2579.....	9	UL2839.....	7
ID1009.....	14	JS2089.....	9	JS2589.....	9	UL2869.....	7
ID1019.....	14	JS2099.....	9	JS2599.....	9	UL2919.....	7
ID1029.....	14	JS2109.....	9	JS2709.....	9	UL4000C.....	7,19
ID1039.....	14	JS2119.....	9	M21099.....	12	UL9010.....	7,19
ID1049.....	14	JS2129.....	9	M21899.....	12		
ID1059.....	14	JS2139.....	9	M15699.....	12		
ID2006.....	14	JS2149.....	9	M15799.....	12		
ID2026.....	14	JS2159.....	9	M15899.....	12		
ID2036.....	14	JS2169.....	9	O10S99.....	11		
ID2046.....	14	JS2179.....	9	O16S99.....	11		
ID2056.....	14	JS2189.....	9	O20S99.....	11		
ID2816.....	14	JS2199.....	9	O311S9.....	11		



# **BAND-IT**<sup>®</sup>

**ENGINEERED CLAMPING SOLUTIONS**

***More Clamps***  
***More Markets***  
***More Solutions!***

**Aerospace**  
**Automotive**  
**Cable TV**  
**Coal & Power**  
**Construction**  
**Electrical**  
**Government**  
**Industrial**  
**Marine**  
**Military**  
**Mining**  
**Municipal**  
**Oil & Gas**  
**Petrochemical**  
**Pole & Signal Mounting**  
**Ship Building**  
**Solar**  
**Subsea**  
**Telecommunications**  
**Traffic**  
**Utility**



**IDEX**

Copyright BAND-IT<sup>®</sup>  
A Unit of IDEX Corporation  
Denver, Colorado U.S.A. 2015 Rev 2. All rights reserved.

[WWW.BAND-IT-IDEX.COM](http://WWW.BAND-IT-IDEX.COM)