

Electric Fastening Solutions Guide

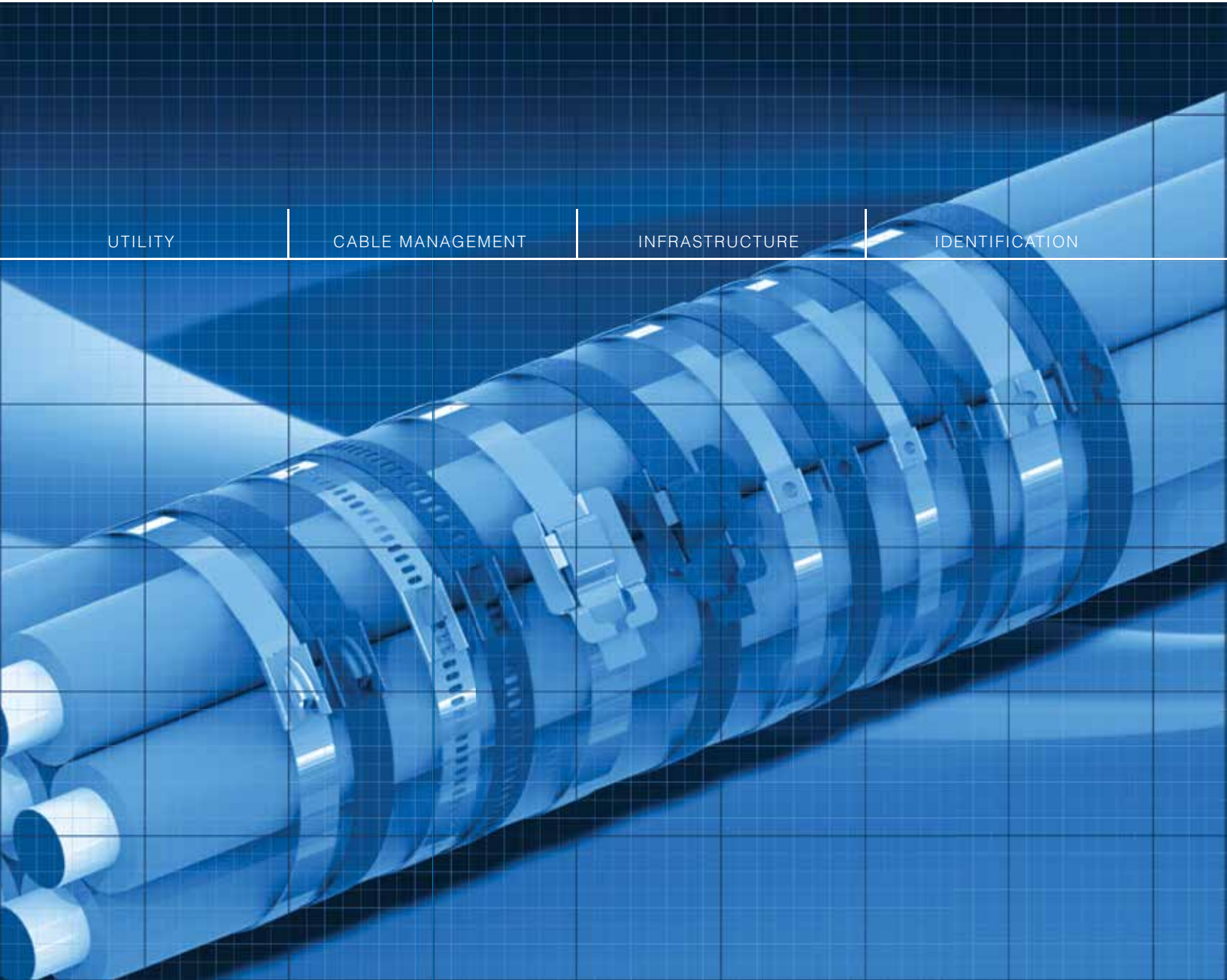
www.band-it-idex.com

UTILITY

CABLE MANAGEMENT

INFRASTRUCTURE

IDENTIFICATION





BAND-IT® IDEX, Inc. is a high quality, innovative fastening solutions company providing service and value second to none!



Founded in Denver, Colorado in 1937, BAND-IT® is acknowledged as the world's leader in quality engineered band clamping systems. A unit of IDEX corporation, BAND-IT® has an international network of representatives and distributors, with manufacturing and distribution facilities serving users worldwide.

IDEX Core Values

Our **CUSTOMER** is our priority.

We **GROW** our enterprise and people.

Our **INTEGRITY** is paramount.

We strive for **EXCELLENCE**.

We are passionate about **SUCCESS**.

Certificates

As demonstration of our ongoing commitment to excellence, quality and environmental management, BAND-IT is proud to display the following certificates of compliance to the prestigious International Standards:

- ISO 9001
- ISO 14001
- TS16949

Since becoming ISO/TS certified, BAND-IT® continues to seek new and innovative ways to manufacture products through our continuous efforts of upgrading equipment, employee training and internal quality assurance in our quest to deliver the best products within the market place to our customers.

Patents:

- 5,483,998 - Lip lock formation for Ultra-Lok®
- 5,566,726 - Ultra-Lok® tension tool
- 5,303,571 - Method of producing an improved one-piece band clamp
- 5,452,523 - Measuring banding material in lengths
- 5,850,674 - Smooth band clamp with movable ball locking element
- 6,014,792 - Ultra-Lok® band clamp including separately attached buckle
- 6,260,704 B - Band tote assembly
- 6,481,467 - Pneumatic Automatic Air Tool S350
- 7,650,680 - Improved dimple locking method for bundling objects
- 7,484,274 - Free end band and seal
- 8,146,212 - Free end band

Trademarks:

BAND-IT®, BAND-IT Jr.®, Junior®, BAND-FAST®, COLOR-IT®, Tri-Lokt®, Thriftool®, Tie-Lok®, Tie-Lok Tool®, Band-Lok®, Self-Lok®, and Ultra-Lok® are registered trademarks owned by BAND-IT IDEX, Inc., a unit of IDEX Corporation.

World Headquarters

North American Operations
BAND-IT IDEX, Inc.

Western Hemisphere Sales
and Marketing

Tel: (303) 320-4555

Toll Free : 800-525-0758

Fax: (303) 333-6549

Email:
info.BAND-IT@idexcorp.com

Website:
www.band-it-idex.com

European Operations

BAND-IT Company Limited

Tel: (44) 1246-477333

UK Sales Tel:
(44) 1246-479479

European Sales Tel:
(44) 1246-479480

Fax (44) 1246-476324

Sales Email:
BAND-ITUKSALES.BAND-IT@idexcorp.com

Email:
EUROPEinfo.BAND-IT@idexcorp.com

Website:
www.band-it-idex.eu

Pacific Rim Sales Office

Tel: (65) 6265-8853

Fax: (65) 6764-4020

Email:
PACIFICRIMinfo.BAND-IT@idexcorp.com

Latin American Sales Office

Tel: (52) 55 5825-8502

Fax: (52) 55 5825-8502

Email:
LAinfo.BAND-IT@idexcorp.com

Japan Sales Office

Tel: (81) 90 2917 8463

Email:
BJD.Japaninfo.BAND-IT@idexcorp.com

China Shanghai Sales Office

Tel: (86) 512 6283-3000

Fax: (86) 512 6283-3928

Email:
BIDChina.BAND-IT@idexcorp.com

Website
www.band-it.com.cn



Ball-Lok Ties.....8
 Ball-Lok™ Ties.....9
 Tie-Lok® Ties.....10
 Multi-Lok Ties.....11
 Ultra-Lok® Ties.....11
 BAND-IT® Ties.....12
 All Purpose & Coated Ties.....13
 BAND-FAST®.....14
 Pole & Tower Attachment.....16
 Pro-Mark™ Pin Marking System.....17
 Identification System.....18
 Easy Read Identification.....19
 Tools.....20-21
 Certifications.....22

STAINLESS STEEL CABLE TIES



Ball-Lok
Ball-Lok™

Tie-Lok®
Mini Tie-Lok

Multi-Lok

BAND-IT®

Ball-Lok.....8

- The leader in safety, durability and reliability in the most demanding applications
- Engineered for exceptional durability and strength
- High Performance polyester coating for extreme environments
- Install by hand or with a variety of tools

Ideal use in harsh duty or marine environments.

Ball-Lok™9

- Ideal for most general purpose applications
- Engineered for low installed cost
- Coated with black epoxy or uncoated
- Install by hand or with a variety of tools

Ideal for easy to use applications such as cable bundling and attaching cables to trays.

Tie-Lok® and Mini Tie-Lok Ties.....10

- Smooth ID ties with low profile
- A strong patented dimple lock
- Provides fast, reliable, consistent clamp with no slip-back
- Great for bundling cable and solid pipework

Ideal in mild atmosphere for fresh water applications and/or identification purposes.

Multi-Lok.....11

- Self-locking ties
- Fast, easy application
- Install by hand or with a variety of tools
- Unique multiple locking system
- Coated with Nylon 11 or uncoated

Ideal for application use in industrial facilities that require fast installation and corrosion resistance.

BAND-IT® Ties.....12

- Can easily be unfastened for reuse
- Unique buckle design
- Stainless Steel available in uncoated or coated with PPA 571 or Nylon 11
- Capable of a double wrap for additional strength
- Apply by hand or with hand tools

Ideal for indoor/outdoor applications that deal with physical abrasion, resistant to fire and corrosion, and provide extreme life under UV light and extreme temperatures.



BAND-IT® Electrical Product Solutions

Product Matrix

Performance Characteristics

Speedy Install	Loop Tensile Strength	Salt Spray Resistance	UV Resistance	LSF / Zero Halogen	Temperature Extremes	Long Service Life	Vibration Resistance	Chemical Resistance
----------------	-----------------------	-----------------------	---------------	--------------------	----------------------	-------------------	----------------------	---------------------

Performance Score

Scale - Least Suitable → Most Suitable

1 2 3 4 5 **Multiple** → M

Ball-Lok Ties	Fully Coated 316SS (Polyester)	5	4	5	4	5	3	4	2	3	35	
	Uncoated 316SS	5	4	5	5	5	5	5	2	5		41
	Uncoated 304SS	5	4	3	5	5	5	5	2	4		
Smooth ID Ball-Lok Ties	Fully Coated 316SS (Epoxy)	5	3	5	2	5	2	3	2	2	29	
	Uncoated 316SS	5	3	5	5	5	5	5	2	5		40
	Uncoated 304SS	5	3	3	5	5	5	5	2	4		
Ball-Lokt Ties	Fully Coated 316SS (Epoxy)	5	3	5	2	5	2	3	2	2	29	
	Uncoated 316SS	5	3	5	5	5	5	5	2	5		40
	Uncoated 304SS	5	3	3	5	5	5	5	2	4		
Multi-Lok Ties	Fully Coated (Nylon 11) 316SS	4	2	5	4	5	2	4	4	2	32	
	Uncoated 316SS	4	2	5	5	5	5	5	4	5		40
	Fully Coated PPA571 316SS	3	3	5	4	5	2	4	5	3		
BAND-IT AE Ties	Uncoated 316SS	3	3	5	5	5	5	5	5	5	41	
	316SS	4	2	5	5	5	5	5	5	5		41
	304SS	4	2	3	5	5	5	5	5	3		
316SS PPS Coated Stainless Steel Band	Fully Coated PPA571 316SS	2	4	5	4	5	2	4	5	3	34	
	Fully Coated PPA571 316SS	2	4	5	4	5	2	4	4	3		
All Purpose Band	Uncoated 316SS	2	4	5	5	5	5	5	5	5	41	
	1/4 Hard 201 SS	4	5	2	5	5	5	5	5	2		



Application Match

Marine & Offshore (Outdoor)	Marine, Chemical Plant, Industrial Complex (Indoor)	Utility Pole and Tower	Heavy Mounting Utility Pole and Tower	Mining
Cable tray Bundling	General Fastening and Mounting			

Description

Approvals & Listings

Page

X	X	X	X	X	Description	Approvals & Listings	Page
X	X	X		X	HD Ball-Lok Ties 316SS, 0.010" Coated Black Polyester	UL	8,9
X	X	X		X	HD Ball-Lok Ties 316SS, 0.010"	UL	8,9
	X	X		X	HD Ball-Lok Ties 304SS, 0.010"	UL	8,9
	X			X	Ball-Lok Tie, 316SS, 0.010" (base metal) 0.016" (coated, Nylon 11)	DNV, Lloyds, GL, RMRS, CE	NL
X	X	X		X	Ball-Lok Tie, 316SS, 0.010"	DNV, Lloyds, GL, RMRS, CE	NL
	X	X		X	Ball-Lok Tie, 304SS, 0.010"	DNV, Lloyds, GL, RMRS, CE	NL
	X			X	Ball-Lokt™ Tie, 316SS, 0.010 CTD Black Epoxy	UL, DNV	8,9
X	X	X		X	Ball-Lokt™ Tie, 316SS, 0.010"	UL, DNV	8,9
	X	X		X	Ball-Lokt™ Tie, 304SS, 0.010"	UL, DNV	8,9
X	X	X		X	Multi-Lok Tie, 316SS, 0.011" (base metal) 0.018" (coated, Nylon 11)	DNV, Lloyds, GL, RMRS, CE, UL	11
X	X	X		X	Multi-Lok Tie, 316SS, 0.011" Thickness	DNV, Lloyds, GL, RMRS, CE, UL	11
X	X	X		X	BAND-IT® Tie, 316SS, 0.015" (base metal) 0.040" (PPA 571)	DNV, Lloyds, GL, RMRS, CE	12
X	X	X		X	BAND-IT® Tie, 316SS, 0.015" base metal Thickness	DNV, Lloyds, GL, RMRS, CE	12
X	X	X		X	Tie-Lok® Tie SID, 316SS, 0.015" Thickness	UL, DNV(uk), GL(uk), Lloyds(uk), RMRS(uk)	10
	X	X		X	Tie-Lok® Tie, SID, 304SS, 0.020" Thickness	UL, DNV(uk), GL(uk), Lloyds(uk), RMRS(uk)	10
X	X	X		X	Coated Band, 316SS, 0.015" (base metal) 0.045" (coated, PPA571) x 82.5'	DNV, Lloyds, ABS, RMRS, CE, GL	13
X	X			X	All Purpose Band, 316SS 0.030" (base metal) 0.050" (CTD, PPA571) x 82.5'	Lloyds, RMRS, GL	13
X	X			X	All Purpose Band, 316SS 0.030" (base metal) 0.050" x 82.5'		13
		X	X	X	Ultra-Lok® Band, 201SS 1/4 Hard		14



APPLICATION

Oil Rigs, Ships, Chemical Plants, Refineries, Industrial Complexes, Public Buildings, Mining, Bridges and Tunnels, Power Distribution, Transmission and Communications



Engineered Fastening and Bundling Systems for Extreme Conditions:

Electrical cable management, heat and sound shield fastening, instrument tubing and device attachment.

Products: Ball-Lok™, Ball-Lok, Multi-Lok, Tie-Lok®, BAND-IT® Tie, BAND-FAST®, Uncoated and Coated Band & Clip**.

Benefits:

- Superior performance in extreme temperatures, chemical exposure, salt spray conditions and UV light exposure
- Permanent and secure locking mechanisms
- Reliable and efficient installation tools
- Low installed cost and long service life
- Proven performance coatings for abrasion protection and dissimilar metal contact (Nylon11, PPA 571, Polyester, Epoxy)
- Proven and controlled materials including - 201 SS, 304 SS, 316 SS, Alloy 400 & 625
- Quality certified manufacturing process management – ISO9001 with TS 16949



Identification Systems:

Indoor/Outdoor: Durable cable, pipe, fixture and asset identification engineered for extreme environments.

Products:

- BAND-IT® ID tags, COLOR-IT® banding, stainless steel embossing tape, imprintable stainless steel tags, stainless steel characters and carrier strips
- Pro-Mark™ tag imprinter, custom embossing service, hand held stainless steel tape embosser, bench mountable manual imprinter with indexing template

Benefits:

- Functional in extreme temperatures, UV light exposure, salt spray and chemical exposure
- Long service life
- BAND-FAST® - 201 SS, 304 SS, 316 SS, Alloy 400 & 625
- Quality certified manufacturing process management – ISO9001 with TS 16949
- COLOR-IT® stainless steel banding
- Emboss, engrave or imprintable





APPLICATION



Engineered Mounting Systems: Outdoor pole, tower & aerial applications for power, communication infrastructure and alternative energy.

Products:

- Mounting Hardware: Bolt clamp, mounting plate, stainless steel brackets
- Band and Buckle Systems: Ultra-Lok® system, band and buckle in various materials and widths

Benefits:

- Superior performance in extreme temperatures, UV light exposure and salt spray
- Corrosion resistant plating on all hardware
- Full tension and heavy duty fastening
- Low installed cost and long service life
- Band & Buckle - 201 SS, 304 SS, 316 SS, Alloy 400 & 625
- Quality certified manufacturing process management – ISO9001 with TS 16949
- Easily applied to pole without drilling
- Ideal for clamping cable splice closures
- Easy to install with no special tools required
- Many banding options



Definitions

- **Corrosion Resistance** - The ability of a material to withstand degradation in specific environments.
- **Loop Tensile Strength** - The maximum amount of force, applied radially, an installed clamp/tie will withstand prior to failure.
- **Nylon 11** - Non-toxic polymer cable tie coating resistant to stress cracking, abrasion, impact, salt spray and typical airborne pollutants. When subjected to fire, this coating is halogen-free and produces low amounts of smoke.
- **Polyester** - A high performance black polyester, non-toxic polymer coating for rolled band resistant to stress cracking, abrasion, impact, salt spray and typical airborne pollutants. When subjected to fire, this coating is halogen free and produces low amounts of smoke.
- **PPA 571** - A non-toxic polymer coating for rolled band resistant to stress cracking, abrasion, impact, salt spray and typical airborne pollutants. When subjected to fire, this coating is halogen free and produces low amounts of smoke.
- **Black Epoxy** - Resistant to chemical and salt water environments.
- **Production Tool** - Power tools to install band clamps and tie products consistently.



BALL-LOK TIES



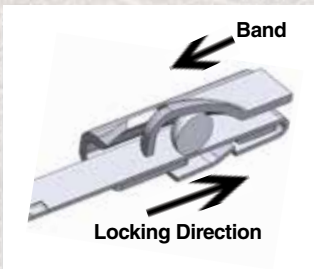
Ball-Lok Ties are manufactured in Denver, Colorado USA, from Type 304 and 316 Stainless Steel

BAND-IT Ball-Lok Ties come with a heavy duty buckle that offers superior corrosive, abrasive and UV resistance performance that makes this product perfect for harsh duty or marine environments. This product line is also available with halogen free, low smoke black polyester coating which reduces the risk of cutting or abrading cable insulation or hose coverings.

- Two widths – 0.18" (4.6mm) and 0.31" (7.9mm)
- Self locking design allows fast installation
- Install with tools to ensure uniform tension and clean tail cut-off for safe handling
- Available in Type 304 and Type 316 stainless steels to provide good to excellent corrosion resistance in a wide variety of environments
- Fully coated with black, low smoke, halogen free non-toxic polyester



Tools to be used with this product: CB1000, K50289, XE9229. Please see pages 20-21.



Part Number		Material	Width		Length		Base Material Thickness		Maximum Bundle Diameter		Minimum Loop Tensile Strength	Package Quantity
Coated	Uncoated		In	mm	In	mm	In	mm	In	mm	lbs	
	KU4U046-0201	304 SS	0.18	4.6	7.9	201	0.010	0.25	2.0	52	100	100
	KU4U046-0259	304 SS	0.18	4.6	10.2	259	0.010	0.25	2.7	69	100	100
	KU4U046-0360	304 SS	0.18	4.6	14.2	360	0.010	0.25	4.0	102	100	100
	KU4U046-0520	304 SS	0.18	4.6	20.5	520	0.010	0.25	6.0	156	100	100
	KU4U046-0679	304 SS	0.18	4.6	26.7	679	0.010	0.25	8.0	208	100	100
	KU4U046-0838	304 SS	0.18	4.6	33.0	838	0.010	0.25	10.0	254	100	100
	KU4U079-0201	304 SS	0.31	7.9	7.9	201	0.010	0.25	2.0	52	250	50
	KU4U079-0259	304 SS	0.31	7.9	10.2	259	0.010	0.25	2.7	69	250	50
	KU4U079-0360	304 SS	0.31	7.9	14.2	360	0.010	0.25	4.0	102	250	50
	KU4U079-0520	304 SS	0.31	7.9	20.5	520	0.010	0.25	6.0	156	250	50
	KU4U079-0679	304 SS	0.31	7.9	26.7	679	0.010	0.25	8.0	208	250	50
	KU4U079-0838	304 SS	0.31	7.9	33.0	838	0.010	0.25	10.0	254	250	50
KU6B046-0201	KU6U046-0201	316 SS	0.18	4.6	7.9	201	0.010	0.25	2.0	52	100	100
KU6B046-0259	KU6U046-0259	316 SS	0.18	4.6	10.2	259	0.010	0.25	2.7	69	100	100
KU6B046-0360	KU6U046-0360	316 SS	0.18	4.6	14.2	360	0.010	0.25	4.0	102	100	100
KU6B046-0520	KU6U046-0520	316 SS	0.18	4.6	20.5	520	0.010	0.25	6.0	156	100	100
KU6B046-0679	KU6U046-0679	316 SS	0.18	4.6	26.7	679	0.010	0.25	8.0	208	100	100
	KU6U046-0838	316 SS	0.18	4.6	33.0	838	0.010	0.25	10.0	254	100	100
KU6B079-0201	KU6U079-0201	316 SS	0.31	7.9	7.9	201	0.010	0.25	2.0	52	250	50
KU6B079-0259	KU6U079-0259	316 SS	0.31	7.9	10.2	259	0.010	0.25	2.7	69	250	50
KU6B079-0360	KU6U079-0360	316 SS	0.31	7.9	14.2	360	0.010	0.25	4.0	102	250	50
KU6B079-0520	KU6U079-0520	316 SS	0.31	7.9	20.5	520	0.010	0.25	6.0	156	250	50
KU6B079-0679	KU6U079-0679	316 SS	0.31	7.9	26.7	679	0.010	0.25	8.0	208	250	50
	KU6U079-0838	316 SS	0.31	7.9	33.0	838	0.010	0.25	10.0	254	250	50



BALL-LOKT™ TIES



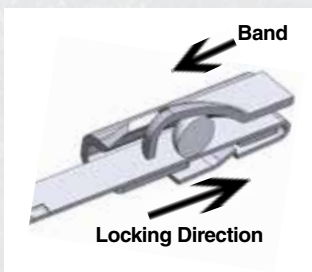
Ball-Lokt™ Ties are manufactured in China from Type 316 and 304 Stainless Steel

Our Ball-Lokt™ Tie's design is the globally accepted industry standard.

- Four widths – 0.18" (4.6mm), 0.31" (7.8mm), 0.47" (12mm), and 0.59" (15mm) for applications ranging from identification tagging to bundling large cables
- Self locking design allows fast installation
- Installation with hand tool to assure uniform tension and clean tail cut-off for safe handling
- Available in Type 304 and Type 316 stainless steels to provide good to excellent corrosion resistance in a wide variety of environments
- Coated Ball-Lokt™ Ties are fully coated with black epoxy



Tools to be used with this product: CB1000, K50289, XE9229. Please see pages 20-21.



Ball-Lokt™ Ties		Material	Width		Length		Base Material Thickness		Maximum Diameter Single Wrap		Minimum Loop Tensile Strength	Package Quantity
Part Number	Coated		In	mm	In	mm	In	mm	In	mm		
		304 SS	0.18	4.6	13.8	350	0.010	0.25	3.9	99	100	100
		304 SS	0.18	4.6	19.7	500	0.010	0.25	5.8	147	100	100
KT6B046-0200	KT6U046-0200	316 SS	0.18	4.6	7.9	200	0.010	0.25	2.0	52	100	100
KT6B046-0350	KT6U046-0350	316 SS	0.18	4.6	13.8	350	0.010	0.25	3.9	99	100	100
KT6B046-0500	KT6U046-0500	316 SS	0.18	4.6	19.7	500	0.010	0.25	5.8	147	100	100
		304 SS	0.31	7.8	7.9	200	0.010	0.25	2.0	52	175	100
		304 SS	0.31	7.8	13.8	350	0.010	0.25	3.9	99	175	100
		304 SS	0.31	7.8	19.7	500	0.010	0.25	5.8	147	175	100
KT6B078-0200	KT6U078-0200	316 SS	0.31	7.8	7.9	200	0.010	0.25	2.0	52	175	100
KT6B078-0350	KT6U078-0350	316 SS	0.31	7.8	13.8	350	0.010	0.25	3.9	99	175	100
KT6B078-0500	KT6U078-0500	316 SS	0.31	7.8	19.7	500	0.010	0.25	5.8	147	175	100
KT6B150-0500	KT6U150-0500	316 SS	0.59	15	19.7	500	0.014	0.35	5.8	147	325	50
KT6B150-0600	KT6U150-0600	316 SS	0.59	15	23.6	600	0.014	0.35	7.0	179	325	50
KT6B150-0700	KT6U150-0700	316 SS	0.59	15	27.6	700	0.014	0.35	8.3	211	325	50
KT6B150-0750	KT6U150-0750	316 SS	0.59	15	29.5	750	0.014	0.35	9.6	243	325	50
KT6B150-0900	KT6U150-0900	316 SS	0.59	15	35.4	900	0.014	0.35	10.8	274	325	50

TIE-LOK® TIES



BAND-IT® Tie-Lok® ties offer a unique, dimple lock with a smooth ID and a low profile.

This is a fast, consistent and reliable clamp. Used in many industries such as automotive, cable bundling and identification.

- 304 Stainless Steel offers very good resistance to mild atmosphere, fresh water and the sun's UV rays
- 316 Stainless Steel for extreme environments
- Forms a low profile single wrapped assembly to secure cables, hoses, I.D. Tags, CV Boots, filter bags

Tools to be used with this product: TL3800 (3/8" Only), A92079 and IT Series. Please see pages 20-21.

Part No.	Material	Width		Length		Thickness		Maximum Diameter Single Wrap		Minimum Loop Tensile Strength (Lbs)	Package Quantity
		In	mm	In	mm	In	mm	In	mm		
Tie-Lok® Tie											
AS2119	304 SS	0.25	6.4	10.0	254	0.015	0.38	2	51	250	100/Bag
AS2129	304 SS	0.25	6.4	16.5	419	0.015	0.38	4	101	250	100/Bag
AS2139	304 SS	0.25	6.4	22.5	572	0.015	0.38	6	152	250	100/Bag
AS2149	304 SS	0.25	6.4	29.0	737	0.015	0.38	8	203	250	100/Bag
AS2159	304 SS	0.25	6.4	35.0	889	0.015	0.38	10	254	250	100/Bag
AS4119	316 SS	0.25	6.4	10.0	254	0.015	0.38	2	51	250	100/Bag
AS4129	316 SS	0.25	6.4	16.5	419	0.015	0.38	4	101	250	100/Bag
AS4139	316 SS	0.25	6.4	22.5	572	0.015	0.38	6	152	250	100/Bag
AS4149	316 SS	0.25	6.4	29.0	737	0.015	0.38	8	203	250	100/Bag
AS4159	316 SS	0.25	6.4	35.0	889	0.015	0.38	10	254	250	100/Bag
AS6219	304 SS	0.375	9.6	7.2	184	0.020	0.51	1.5	40	350	100/Bag
AS6229	304 SS	0.375	9.6	10.0	254	0.020	0.51	2	51	350	100/Bag
AS6239	304 SS	0.375	9.6	16.0	406	0.020	0.51	4	101	350	100/Bag
AS6249	304 SS	0.375	9.6	22.5	572	0.020	0.51	6	152	350	100/Bag
AS6259	304 SS	0.375	9.6	29.0	737	0.020	0.51	8	203	350	100/Bag

Protective Sleeving



Used in many industries such as automotive, cable bundling and identification.

Tools to be used with this product: A91079 and IT Series. Please see pages 20-21.

Part No.	Material	Width		Length		Thickness		Maximum Diameter Single Wrap		Minimum Loop Tensile Strength (Lbs)	Package Quantity
		In	mm	In	mm	In	mm	In	mm		
Mini Tie-Lok® Tie											
AS2219	304 SS	0.177	4.5	7	165	0.015	0.38	1	25	100	100/Bag
AS2229	304 SS	0.177	4.5	10	254	0.015	0.38	2	51	100	100/Bag
AS2239	304 SS	0.177	4.5	16	406	0.015	0.38	4	102	100	100/Bag
AS2249	304 SS	0.177	4.5	22.5	572	0.015	0.38	6	152	100	100/Bag
AS2259	304 SS	0.177	4.5	29	737	0.015	0.38	8	203	100	100/Bag
AS4219	316 SS	0.177	4.5	7	165	0.015	0.38	1	25	100	100/Bag
AS4229	316 SS	0.177	4.5	10	254	0.015	0.38	2	51	100	100/Bag
AS4239	316 SS	0.177	4.5	16	406	0.015	0.38	4	102	100	100/Bag
AS4249	316 SS	0.177	4.5	22.5	572	0.015	0.38	6	152	100	100/Bag
AS4259	316 SS	0.177	4.5	29	737	0.015	0.38	8	203	100	100/Bag



MULTI-LOK TIES



- UL Listed, CE Marked, DNV Approved
- Self-locking ties
- Two widths - 0.276" (7.01mm) and 0.472" (12.0mm)
- Fast, easy application
- Install by hand or with a variety of tools
- Unique multiple locking system
- Coated with Nylon 11 or uncoated 316 SS styles available

Tools to be used with this product: CB1000, M50389 & XE9229. Please see pages 20-21.

Multi-Lok Ties	Part No	Material	Width		Length		Thickness (Coated/Uncoated Coated)		Maximum Diameter Single Wrap		Minimum Loop Tensile Strength (Lbs)	Package Quantity
			In	mm	In	mm	In	mm	In	mm		
Coated	Uncoated											
AE6119	AE6019	316 SS	0.276	7.01	6.0	150	.018 / .011	.46 / .28	1.3	33	250	100/Bag
AE6129	AE6029	316 SS	0.276	7.01	9.0	225	.018 / .011	.46 / .28	2.2	57	250	100/Bag
AE6139	AE6039	316 SS	0.276	7.01	12.0	300	.018 / .011	.46 / .28	3.2	81	250	100/Bag
AE6149	AE6049	316 SS	0.276	7.01	18.0	450	.018 / .011	.46 / .28	5.1	129	250	100/Bag
AE6159	AE6059	316 SS	0.276	7.01	24.0	610	.018 / .011	.46 / .28	7.1	180	250	100/Bag
AE7119	AE7019	316 SS	0.472	12.0	6.0	150	.018 / .011	.46 / .28	1.3	33	415	100/Bag
AE7129	AE7029	316 SS	0.472	12.0	9.0	225	.018 / .011	.46 / .28	2.2	57	415	100/Bag
AE7139	AE7039	316 SS	0.472	12.0	12.0	300	.018 / .011	.46 / .28	3.2	81	415	100/Bag
AE7149	AE7049	316 SS	0.472	12.0	18.0	450	.018 / .011	.46 / .28	5.1	129	415	100/Bag
AE7159	AE7059	316 SS	0.472	12.0	24.0	610	.018 / .011	.46 / .28	7.1	180	415	100/Bag



ULTRA-LOK® TIES

Tools to be used with this product: A94079. Please see pages 20-21.



- Smooth ID ties with low profile
- Stainless Steel tie with ULTRA-LOK® locking style
- Provides fast, reliable, consistent clamp
- Great for cable bundling

Part No.	Material	Width		Length		Thickness		Maximum Diameter Single Wrap		Minimum Loop Tensile Strength (Lbs)	Package Quantity
		In	mm	In	mm	In	mm	In	mm		
ULTRA-LOK Ties											
AU2029	201 SS	0.25	6.4	8	203	0.015	0.38	1.5	38	400	100/Bag
AU2039	201 SS	0.25	6.4	10	254	0.015	0.38	2.5	63	400	100/Bag
AU2049	201 SS	0.25	6.4	12	305	0.015	0.38	3.0	76	400	100/Bag
AU2059	201 SS	0.25	6.4	14	356	0.015	0.38	3.8	96	400	100/Bag
AU2069	201 SS	0.25	6.4	16	406	0.015	0.38	4.5	114	400	100/Bag
AU2079	201 SS	0.25	6.4	19	483	0.015	0.38	5.4	137	400	100/Bag
AU2089	201 SS	0.25	6.4	24	610	0.015	0.38	7.0	177	400	100/Bag
AU2099	201 SS	0.25	6.4	29	737	0.015	0.38	8.0	215	400	100/Bag
AU2159	201 SS	0.25	6.4	35	889	0.015	0.38	10.5	266	400	100/Bag

BAND-IT® REUSABLE TIES



- Constructed of 200/300 Stainless Steel (coating is with Nylon 11)
- One-piece construction with unique buckle designs capable of double wrapping for special strength requirements and reliable installation



Coated AA
Uncoated AH

BAND-IT Ties Coated	BAND-IT Ties Uncoated	Material*	Width		Length		Thickness AA Coated		Thickness AH Uncoated		Maximum Diameter Single Wrap		Minimum Loop Tensile Strength (Lbs)
			In	mm	In	mm	In	mm	In	mm	In	mm	
AA Ties	AH Ties												
AA1118	AH1115	200/300 SS	1/4	6.4	6	152	0.026	0.66	0.015	0.38	1.5	38	75/300**
AA1128	AH1125	200/300 SS	1/4	6.4	9	229	0.026	0.66	0.015	0.38	2.5	63	75/300**
AA1138	AH1135	200/300 SS	1/4	6.4	12	305	0.026	0.66	0.015	0.38	3.4	86	75/300**
AA1148	AH1145	200/300 SS	1/4	6.4	18	457	0.026	0.66	0.015	0.38	5.4	137	75/300**
AA1158	AH1155	200/300 SS	1/4	6.4	24	610	0.026	0.66	0.015	0.38	7.3	185	75/300**
AA3118	AH3115	200/300 SS	3/8	9.6	6.0	152	0.026	0.66	0.015	0.38	1.5	38	100/500**
AA3128	AH3125	200/300 SS	3/8	9.6	9	229	0.026	0.66	0.015	0.38	2.5	63	100/500**
AA3138	AH3135	200/300 SS	3/8	9.6	12.0	305	0.026	0.66	0.015	0.38	3.4	86	100/500**
AA3148	AH3145	200/300 SS	3/8	9.6	18	457	0.026	0.66	0.015	0.38	5.4	137	100/500**
AA3158	AH3155	200/300 SS	3/8	9.6	24	610	0.026	0.66	0.015	0.38	7.3	185	100/500**
AA3168	AH3165	200/300 SS	3/8	9.6	30	762	0.026	0.66	0.015	0.38	9.1	231	100/500**
AA3178	AH3175	200/300 SS	3/8	9.6	36	914	0.026	0.66	0.015	0.38	11	280	100/500**
AA8638		200/300 SS	5/8	15.9	12	305	0.044	1.1			3.4	86	200/800**
AA8648		200/300 SS	5/8	15.9	18	457	0.044	1.1			5.4	137	200/800**
AA8658		200/300 SS	5/8	15.9	24	610	0.044	1.1			7.3	185	200/800**
AA8668		200/300 SS	5/8	15.9	30	762	0.044	1.1			9.1	231	200/800**
AA8678		200/300 SS	5/8	15.9	36	914	0.044	1.1			11	280	200/800**

Material thickness includes coating
**Single / Double Wrapped



- Constructed of 316 Stainless Steel with PPA571 coating
- PPA 571 is resistant to stress cracking, adverse weather conditions, detergents, salt spray and typical airborne pollutants
- One-piece construction with unique buckle designs capable of double wrapping for special strength requirements and reliable installation



Coated AE



Part No	Material*	Width		Length		Thickness Coated		Maximum Diameter Single Wrap		Minimum Loop Tensile Strength (Lbs)	Package Quantity
		In	mm	In	mm	In	mm	In	mm		
BAND-IT AE Ties											
AE1118	316 SS	1/4	6.4	6	152	0.045	1.1	1.5	38	75/300**	100/Bag
AE1128	316 SS	1/4	6.4	9	229	0.045	1.1	2.5	63	75/300**	100/Bag
AE1138	316 SS	1/4	6.4	12	305	0.045	1.1	3.4	86	75/300**	100/Bag
AE1148	316 SS	1/4	6.4	18	457	0.045	1.1	5.4	137	75/300**	100/Bag
AE1158	316 SS	1/4	6.4	24	610	0.045	1.1	7.3	185	75/300**	100/Bag
AE3118	316 SS	3/8	9.6	6	152	0.045	1.1	1.5	38	100/500**	100/Bag
AE3128	316 SS	3/8	9.6	9	229	0.045	1.1	2.5	63	100/500**	100/Bag
AE3138	316 SS	3/8	9.6	12	305	0.045	1.1	3.4	86	100/500**	100/Bag
AE3148	316 SS	3/8	9.6	18	457	0.045	1.1	5.4	137	100/500**	100/Bag
AE3158	316 SS	3/8	9.6	24	610	0.045	1.1	7.3	185	100/500**	100/Bag
AE3168	316 SS	3/8	9.6	30	762	0.045	1.1	9.1	231	100/500**	100/Bag
AE3178	316 SS	3/8	9.6	36	914	0.045	1.1	11	280	100/500**	100/Bag

Material thickness includes coating
**Single / Double Wrapped

ALL PURPOSE & COATED BAND



All Purpose Band

BAND-IT® All Purpose Coated Band offers versatility within varying temperatures and applications.

316SS with fully coated PPA 571. All Purpose Band is ideal for bending and forming around virtually any section or shape. Resistant to physical abrasion, UV light and corrosive environments for many applications where plastic cable ties are simply inadequate or even dangerous.

- Pre-punched holes make fastening quick and easy
- 316SS Band coated with PPA571
- Fastens with screws or nuts and bolts



PPA Coated Band

Type 316 Stainless Steel Clips

BAND-IT® Coated and Uncoated Stainless Steel Band.

316SS band is resistant to corrosive environments, physical abrasion and UV light. Recommended in applications where high vibration is a concern.

- 316SS band available with PPA 571 coating protects against contact of dissimilar metals
- Resistant to chemicals and salt spray
- Apply coated band using BAND-IT® AE Series 316 Stainless Steel Clips and the Bantam Tool
- Available in coils or pre-cut lengths with clip encapsulated at end

BAND-FAST®

BAND-FAST® is a pre-cut band with smoother edges that creates a safer and more efficient working environment with decreased installation labor.



BAND-FAST® Precut and Assembled with Clip

Part No.	Material	Width		Thickness		Finished Length		Max. Dia. Single Wrap		Max. Dia. Double Wrap		Package Quantity	Weight	
		in	mm	in	mm	in	cm	in	mm	in	mm		lbs	kg
BAND-FAST® Precut and Assembled with Clip														
L20399	201 SS	.25	6.4	0.020	0.51	10	25	2	50	not suggested		100/Box	2.2	0.9
L20499	201 SS	.25	6.4	0.020	0.51	16	40	3-1/2	88	1-1/2	38	100/Box	3.1	1.4
L20799	201 SS	.25	6.4	0.020	0.51	19	48	5	127	2-1/2	63	100/Box	3.5	1.6
L20899	201 SS	.25	6.4	0.020	0.51	26	68	7	177	3-1/2	88	100/Box	4.6	2.1
L21099	201 SS	.25	6.4	0.020	0.51	34	86	9	228	4-1/2	114	100/Box	5.6	2.6
L22199	201 SS	.375	9.6	0.025	0.64	16	40	3-1/2	88	1-1/2	38	100/Box	6.2	2.8
L22999	201 SS	.375	9.6	0.025	0.64	44	112	12	305	6	152	25/Box	3.6	1.6
L24299	201 SS	.5	12.7	0.030	0.76	18	45	4	102	2	50	100/Box	10.5	4.8
L24699	201 SS	.5	12.7	0.030	0.76	31	78	8	203	4	101	25/Box	4.7	2.1
L26399	201 SS	.675	15.9	0.030	0.76	21	53	5	127	2-1/2	63	100/Box	15.1	6.8
L27199	201 SS	.675	15.9	0.030	0.76	56	142	16	406	8	203	25/Box	9.0	4.1
L27399	201 SS	.675	15.9	0.030	0.76	69	508	20	508	10	175	25/Box	10.7	4.8
L28499	201 SS	.75	19.1	0.030	0.76	24	60	6	152	3	76	50/Box	10.9	4.9
L28899	201 SS	.75	19.1	0.030	0.76	37	93	10	254	5	127	25/Box	7.6	3.5
L29099	201 SS	.75	19.1	0.030	0.76	50	127	14	355	7	177	25/Box	9.7	4.4
L29299	201 SS	.75	19.1	0.030	0.76	62	157	18	457	9	228	25/Box	11.6	5.3

Tools to be used with this product: C00169, C00369, C07569, C40099 & J02069*.

* The J02069 can be used with 3/8" maximum width product

BAND-FAST® Precut and Assembled with Ear-Lokt Buckle

Part No.	Material	Width		Thickness		Finished Length		Max. Dia. Single Wrap		Max. Dia. Double Wrap		Package Quantity
		in	mm	in	mm	in	cm	in	mm	in	mm	
BAND-FAST® Precut and Assembled with Ear-Lokt Buckle												
BFES-A0830-020	201 SS	.5	12.7	0.030	0.76	20	51	4	102	2	51	25/Box
BFES-A0830-024	201 SS	.5	12.7	0.030	0.76	24	61	5	127	2.5	64	25/Box
BFES-A0830-027	201 SS	.5	12.7	0.030	0.76	27	69	6	152	3	76	25/Box
BFES-A0830-034	201 SS	.5	12.7	0.030	0.76	34	86	8	203	4	102	25/Box
BFES-A0830-041	201 SS	.5	12.7	0.030	0.76	41	104	10	254	5	127	25/Box
BFES-A0830-048	201 SS	.5	12.7	0.030	0.76	48	122	12	305	6	152	25/Box
BFES-A0830-055	201 SS	.5	12.7	0.030	0.76	55	140	14	356	7	178	25/Box
BFES-A0830-069	201 SS	.5	12.7	0.030	0.76	69	175	18	457	9	229	25/Box
BFES-A0830-076	201 SS	.5	12.7	0.030	0.76	76	193	20	508	10	254	15/Box
BFES-A0830-090	201 SS	.5	12.7	0.030	0.76	90	229	24	610	12	305	15/Box
BFES-A1230-020	201 SS	.75	19.1	0.030	0.76	20	51	4	102	2	51	25/Box
BFES-A1230-024	201 SS	.75	19.1	0.030	0.76	24	61	5	127	2.5	64	25/Box
BFES-A1230-027	201 SS	.75	19.1	0.030	0.76	27	69	6	152	3	76	25/Box
BFES-A1230-034	201 SS	.75	19.1	0.030	0.76	34	86	8	203	4	102	25/Box
BFES-A1230-041	201 SS	.75	19.1	0.030	0.76	41	104	10	254	5	127	25/Box
BFES-A1230-048	201 SS	.75	19.1	0.030	0.76	48	122	12	305	6	152	25/Box
BFES-A1230-055	201 SS	.75	19.1	0.030	0.76	55	140	14	356	7	178	25/Box
BFES-A1230-069	201 SS	.75	19.1	0.030	0.76	69	175	18	457	9	229	25/Box
BFES-A1230-076	201 SS	.75	19.1	0.030	0.76	76	193	20	508	10	254	15/Box
BFES-A1230-090	201 SS	.75	19.1	0.030	0.76	90	229	24	610	12	305	15/Box

Tools to be used with this product: C00169, C00369, C07569, C08569 & C40099.

ULTRA-LOK® CLAMPING SYSTEM



UL 4000 Cordless



UL4199
UL Safety Belt (**SOLD SEPARATELY**) is compatible with the UL 4000-C, UL4000-B, UL4000, and UL9010.



UL 9010 Electric

The Ultimate Clamping Systems

Designed for quick installation, tightest clamping force and gap-free inside diameter. The strongest band clamping system available.

- Smooth inside diameter designed to eliminate leak paths
- Single or double wrapped 1/4 hard type 201SS for superior strength and application
- Locks under full tension to assure clamp forces achieved are positively locked in place
- Applied four times faster than conventional clamps
- Consistent and repeatable tensioning
- Buckle is thicker and 2-3 times stronger than other preformed clamps
- Buckle hood protects lock from snags
- Ideal for field repairs



1/2" Ultra-Lok® Band and Buckles.



3/4" Ultra-Lok® Tote with convenient buckle storage.

Part No.	Material	Band Width		Single Wrap		Double Wrap		Band Length		Package Quantity
		In	mm	In	mm	In	mm	In	mm	
Ultra-Lok®										
UL1018**	201 SS	0.5	12.7	3	76	NA	NA	18	457	50/Box
UL1024**	201 SS	0.5	12.7	5	127	2.5	64	24	610	50/Box
UL1028**	201 SS	0.5	12.7	6	152	3.0	76	28	711	50/Box
UL1032**	201 SS	0.5	12.7	7	178	3.5	89	32	813	50/Box
UL1036**	201 SS	0.5	12.7	8	203	4.0	102	36	914	50/Box
UL1046**	201 SS	0.5	12.7	11	279	5.5	140	46	1168	25/Box
UL1056**	201 SS	0.5	12.7	14	356	7.0	178	56	1422	25/Box
UL1070**	201 SS	0.5	12.7	18	457	9.0	229	70	1778	25/Box
UL1086**	201 SS	0.5	12.7	22	559	11.0	280	86	2184	25/Box
UL1096**	201 SS	0.5	12.7	25	635	12.5	318	96	2438	25/Box
UL1106**	201 SS	0.5	12.7	28	711	14.0	356	106	2692	25/Box
UL1116**	201 SS	0.5	12.7	31	787	15.5	394	116	2946	25/Box
UL2020	201 SS	0.75	19.1	4	102	NA	NA	20	508	30/Tote
UL2024	201 SS	0.75	19.1	5	140	NA	NA	24	610	25/Tote
UL2028	201 SS	0.75	19.1	6	152	NA	NA	28	711	21/Tote
UL2032	201 SS	0.75	19.1	7	178	3.5	89	32	813	19/Tote
UL2036	201 SS	0.75	19.1	8	252	4.0	102	36	914	33/Tote
UL2040	201 SS	0.75	19.1	10	254	4.5	127	40	1016	30/Tote
UL2044	201 SS	0.75	19.1	11	267	5.5	140	44	1118	27/Tote
UL2048	201 SS	0.75	19.1	12	305	6.0	153	48	1219	25/Tote
UL2052	201 SS	0.75	19.1	13	330	6.5	165	52	1321	23/Tote
UL2060	201 SS	0.75	19.1	15	381	7.5	191	60	1524	20/Tote
UL2068	201 SS	0.75	19.1	17	445	8.5	216	68	1727	17/Tote
UL2076	201 SS	0.75	19.1	20	508	10.0	254	76	1930	15/Tote
UL2084	201 SS	0.75	19.1	22	559	11.0	280	84	2134	14/Tote
UL2092	201 SS	0.75	19.1	24	622	12.0	305	92	2337	13/Tote
UL2120	201 SS	0.75	19.1	32	826	16.0	407	120	3048	10/Tote
UL2150	201 SS	0.75	19.1	41	1029	20.5	508	150	3810	8/Tote
UL2175	201 SS	0.75	19.1	48	1232	24	610	175	4445	7/Tote

**1/2" bands will require M09387 for UL4000 Series and UL9010 tools. Contact Factory. 3/4" width band lengths 36" or longer in 100' totes; 34" or less in 50' totes. Ultra-Lok® is also available in preformed clamps.



POLE & TOWER ATTACHMENT

Mounting Hardware

Used to mount traffic signs, security devices and enclosures.

- Withstands stress and wind vibration with specially designed reinforcement SIGNFIX® Channel extrusions
- Convenient attachment methods
- Hex head bolts with metal and fiber washer, no nuts required
- Applied with BAND-IT® banding products
- Banding size may vary depending on application. Please contact your BAND-IT® representative for further details



D02189
Single Bolt Flared Leg



D50089
Bolt/Clamp



SX0073 Medium
Channel Extrusion



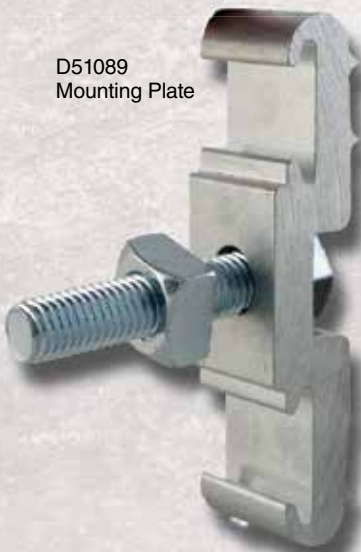
SX0130 Large
Channel Extrusion



SX0090 Large Corner Angle
Channel Extrusion



D51089
Mounting Plate



Part No.	Material	Description	Package Quantity	Package Weight	
				Lbs	Kg
Mounting Hardware					
D00189	200/300SS	Single bolt straight leg, bracket with 304SS bolt, washer and fiber washer. 3/4" slot.	50/Box	7.0	3.2
D00299	200/300SS	5/6"-18x3/4" hex head SS Bolt, SS washer and fiber washer.	50/Box	1.3	0.6
D00499	200/300SS	Single bolt straight leg, bracket only. 3/4" slot.	50/Box	5.6	2.6
D00799	200/300SS	L-Mount, right angle bracket	50/Box	4.4	2.0
D00889	200/300SS	2 bolt straight leg, bracket with SS washer and fiber washer. 3/4" slot.	50/Box	9.2	4.2
D00999	200/300SS	2 bolt straight leg, bracket. 3/4" slot.	50/Box	7.1	3.2
D02189	200/300SS	Single bolt flared leg, bracket with SS bolt, SS washer and fiber washer. 3/4" slot.	50/Box	7.0	3.2
D02299	200/300SS	Single bolt flared leg, bracket only. 3/4" slot.	50/Box	5.5	2.5
D31099	200/300SS	Flared leg mini-bracket with 304SS bolt and fiber washer. 1/2" slot.	50/Box	3.0	1.3
D31599	200/300SS	Straight leg mini-bracket with 304SS bolt and fiber washer. 1/2" slot.	50/Box	3.0	1.3
D50089	Aluminum	Bolt/clamp. Use with maxium 3/4" width band.	50/Box	23.7	10.8
D50489	Aluminum	Bolt/clamp. Use with maxium 1-1/4" width band.	25/Box	33.0	15.0
D51089	Aluminum	1-1/2" (3.81 mm) x 4-3/4" (120.7 mm) with a 2" long 5/8" plated bolt.	25/Box	14.9	6.8
D51289	Aluminum	1-1/2" (3.81 mm) x 5-1/4" (133.3 mm) with a 2" long 5/8" plated bolt.	25/Box	21.0	9.5
D51389	Aluminum	1-1/2" (3.81 mm) x 5-1/4" (133.3 mm) with a 3" long 5/8" plated bolt.	25/Box	21.0	9.5

Pro-Mark™ LCD Pin Marker & Pro-Mark™ USB Pin Marker



- Programmable Marking
- Component Identification
- Component Traceability
- Serial Numbering
- Logo Marketing
- Label and Tag Marking
- Part Numbering
- Batch and Shift Coding



Pro-Mark™ USB Pin Marker

USB Plug and Play with Windows compatible Software.

Easy to use, on-screen creation of marking layouts using simple drag and drop graphical interface. Layouts can be rapidly created and checked before marking.

Technical Specifications

- Marking Area: 4" (100mm) x 3" (75mm)
- Standard Character Sizes: 0.18mm - 99.9mm in increments of 0.18mm
- Marking Formed: 5 x 7, 7 x 9, Varidot, all Windows True Type fonts*, DXF, HPGL
- Min PC Req: 1GHz Pentium or equivalent with USB port*
- Power Supply: 220V, 50Hz, 110V 60Hz
- Operating System: Windows 2000, Windows XP, Windows Vista*

* Applies only to Pro-Mark™ USB Pin Marker



Pro-Mark™ LCD Pin Marker

Tag Example



Workshop Pin Marking Machine

A bench mounted, fully programmable pin marking machine in a low cost simple to use package. Uncompromising build quality ensures the stand alone variable marking system is robust enough for the toughest workshop environments. Operates on standard 110V power (220V available). No air required.

(Required fixture sold separately)

Part. No.	Description	Package Weight
PM1000LCD-P	Bench mounted, standalone pin marking LCD machine	28lbs
PM1000LCD-C	LCD controller for PM1000LCD-P (REQUIRED)	16lbs
PM1000USB	Bench mounted, standalone pin marking machine with USB plug and play PC compatibility	28lbs

IDENTIFICATION SYSTEMS



ID Tag Imprinter Tool

Optional Letter Dial Kits

Tool Accessories

ID Guide Accessory

ID Tags

(Custom embossed tags available with 1/8" lettering only)

ID2859 Guide Accessory: Allows imprinting on SS Bands up to 3/4" X 0.030".

ID Tag Imprinter Tool

Part No.	Tool supplied with:
ID2006	3/32" character wheel
ID2026	1/16" character wheel
ID2036	1/8" character wheel
ID2046	3/16" character wheel
ID2056	1/4" character wheel

Optional Letter Dial Kits

Part No.	Kit supplied with:
ID2816	1/16" character wheel
ID2826	1/8" character wheel
ID2836	3/16" character wheel
ID2846	1/4" character wheel
ID2906	3/32" character wheel

Dot Peen Tags



Embossed Tags



A92079 Tie-Lok® II Tool

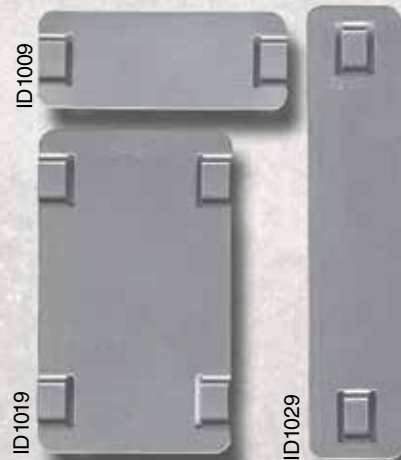


Use with 1/4" wide (6.35mm) Tie-Lok® Ties to apply ID tags.

ID Kit - ID3009



The BAND-IT ID Kit comes with an assortment of blank ID tags to use with the ID Tagging Systems. Includes various Tie-Lok Ties and Tie-Lok tool to fasten tags to items. Total weight is 22.7 lbs, 10.3 Kg.



ID Tags

Part No.	Description
ID1009	304SS 0.75" X 2" X 0.015" - 100/BX
ID1019	304SS 1.5" X 2.5" X 0.015" - 100/BX
ID1029	304SS 0.75" X 3.5" X 0.015" - 100/BX
ID1039	304SS 0.75" X 2" X 0.015" - 1 EA Custom Embossed
ID1049	304SS 1.5" X 2.5" X 0.015" - 1 EA Custom Embossed
ID1059	304SS 0.75" X 3.5" X 0.015" - 1 EA Custom Embossed
ID4409	316SS 0.75" X 2" X 0.010" - 100/BX
ID4419	316SS 1.5" X 2.5" X 0.015" - 100/BX
ID4429	316SS 0.75" X 3.5" X 0.015" - 100/BX
ID4609	316SS 0.75" X 2" X 0.010" - 1 EA Custom Embossed
ID4619	316SS 1.5" X 2.5" X 0.015" - 1 EA Custom Embossed
ID4629	316SS 0.75" X 3.5" X 0.015" - 1 EA Custom Embossed

EASY READ IDENTIFICATION



EASY READ characters slide onto any 3/8" tie and any 3/8" width band.

- BAND-IT EASY READ letters, numbers and symbols made from type 316SS
- Easy to read in dim light and inaccessible places
- Slide directly onto cable ties to create a self-contained wrap tag
- Characters sold individually in bags of 100 pcs
- Contact BAND-IT® for availability



AE0609-100
EASY READ KIT

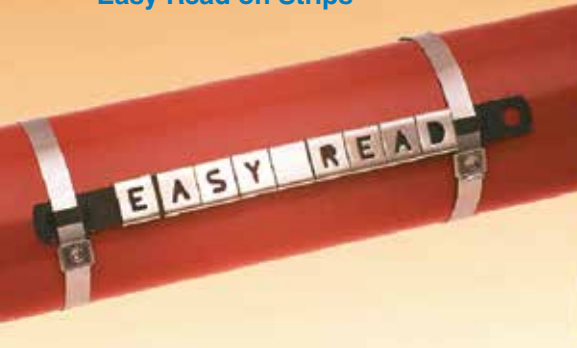
The kit comes in a convenient carrying case and contains an assortment of EASY READ Carriers and Easy Strips.



Apply EASY READ Characters with these ties:

- Tie-Lok® Ties
- BAND-IT® Ties
- Ball-Lok Ties
- Ball-Lokt™ Ties
- Multi-Lok Ties
- 3/8" width band
- PPA Coated Band

Easy Read on Strips



Easy Read on Ties



Easy Read Strips



STAINLESS STEEL TAPE EMBOSSED SYSTEM

ID4002 Stainless Steel Tape Embossing System

With the portable tape embossing tool and a roll of 304 stainless steel tape, you can quickly and easily produce I.D. tags with 3/16" letter size which can be attached with your choice of BAND-IT® ties.

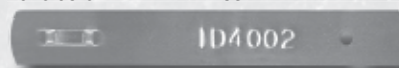
Replacement Rolls: ID4059 - 1/2" X 21' - 2 pack.



ID4002
SS Embossing System



Slot used with your choice of BAND-IT® Ties.



Hole used with wire ties.

Stainless Steel Tape



TOOLS

CB1000

Use with

- Ball-Lok Ties
- Ball-Lokt™ Ties
- Multi-Lok Ties



XE9229 Tensioning Tool

Use with

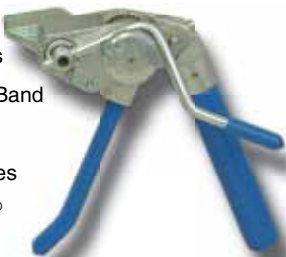
- Ball-Lok Ties
- Ball-Lokt™ Ties
- Multi-Lok Ties



C07569 Bantam Tool

Use with

- BAND-IT Ties
- PPA Coated Band
- Ball-Lok Ties
- Ball-Lokt™ Ties
- BAND-FAST®



K50289 Ball-Lok Tool

Use with

- Ball-Lok Ties
- Ball-Lokt™ Ties



M50389 Multi-Lok Hand Tool

Use with

Multi-Lok Ties



BAND-IT® CB1000 cable bundling tool is very compact and rugged! It's the ideal hand tool for installing heavy duty self locking stainless steel cable ties up to 16mm in size.

- Heavy duty 4140 Chromoly Construction
- Can tension up to 1,000lbs
- Nose design gives flush cut-off
- X-Style winding mandrel allows easy clamp tail insertion
- Ergonomically designed handle provides greater comfort
- 3 way handle adjusts for one or two-handed tensioning

Tensions and cuts off Ball-Lok, Ball-Lokt™ and Multi-Lok ties up to 12mm wide regardless of material or coating.

BAND-IT® Bantam tool is a compact, lightweight, ratchet action tool with built in cutter.

- 3 way handle adjusts for one or two-handed tensioning
- Zinc plated for corrosion resistance
- Useful in tight areas with minimal access
- Designed for easy loading and removing of material
- Use with coated and uncoated BAND-IT® ties or Coated Band up to 19mm wide.

Install Ball-Lok and Ball-Lokt™ stainless steel ties (up to 7.9mm wide) quickly and easily with the lightweight, portable Ball-Lok tool with adjustable tension, side loading and automatic tail cut-off.

Quickly, easily and consistently applies any size Multi-Lok ties. Simply adjust the Multi-Lok tool for the desired tension, slip the Multi-Lok in the slot, or side load, and squeeze the handle. When the proper tension is reached, the Multi-Lok tool automatically cuts the tail off flush with the buckle.



TOOLS

A91079 Mini Tie-Lok II Tool

Use with
0.177" wide (4.5mm)
Mini Tie-Lok® Ties



A92079 Tie-Lok® II Tool

Use with
1/4" wide (6.35mm)
Tie-Lok® Ties



TL3800 Tie-Lok® Tool

Use with
Tie-Lok®
Stainless Steel Ties in 3/8"
width (9.53mm) only



A94079 ULTRA-LOK® Tool

Use with

- ULTRA-LOK® Ties



AE2009 Tool

Use with

- BAND-IT Ties
- Ball-Lok Ties
- Ball-Lokt™ Ties
- Multi-Lok Ties



For applying 0.177" wide smooth ID Mini Tie-Lok® ties for cable bundling, hose bundling and identification tagging. Forms unique dimple lock with a strong locking force and cuts off the excess band flush with top of buckle so the completed lock is smooth and not sharp.

- Forms dimple lock with a strong locking force in excess of 100 pounds (45 Kg)
- Adjustable controlled tension with repeatable results
- Easy to use, lightweight, compact design

Applies 1/4" wide smooth ID Tie-Lok® ties used in cable bundling, hose bundling, CV boot installation and identification tagging. Locks tie with the patented Tie-Lok® and cuts off excess band flush with top of buckle so the completed lock is smooth and not sharp.

- Forms dimple lock with a strong locking force in excess of 250 pounds (130 Kg)
- Adjustable controlled tension with repeatable results
- Easy to use, lightweight, compact design

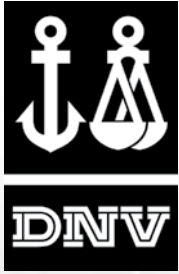
The new TL3800 Tie-Lok® tool. Specifically designed to install 3/8" wide Tie-Lok® stainless steel ties. Repeatable, controlled tie tension. Punch depth limiter. Light weight, compact design. Cut off produces clean hidden edges.

Applies Smooth ID ULTRA-LOK® ties, and Smooth ID Tie-Lok® ties. Locks tie with patented ULTRA-LOK® cut-off for increased loop tensile strength.

The AE2009 hand tool is used for tensioning BAND-IT® cable ties.



BAND-IT Certifications and Approvals



Det Norske Veritas (DNV)

DNV Classification is a service which comprises the development of independent technical standards for vessels, the DNV Rules for Classification of Ships, and the verification of compliance with the rules throughout the vessel's life.

The scope of Classification includes and requires that specified materials, components and systems intended for the vessel are certified in accordance with the DNV rules.

A manufacturer is defined as a company that:

- Manufactures the material/product totally, or
- Performs a part of the production that determines the quality of the material/product, or
- Does the final assembly of the product.

A manufacturer must take and acknowledge the responsibility for the delivered material/product.



American Bureau of Shipping (ABS)

A classification society, with a mission to promote the security of life, property and the natural environment, primarily through the development and verification of standards for the design, construction and operational maintenance of marine-related facilities. ABS' core service is the provision of classification services through the development of standards called ABS Rules. These Rules form the basis for assessing the design and construction of new vessels and the integrity of existing vessels and marine structures.



Lloyd's Register Group

A maritime classification society and independent risk management organization providing risk assessment and mitigation services and management systems certification. Historically, as Lloyd's Register of Shipping, it was a specifically maritime organization.



Russian Maritime Register of Shipping (RS)

The activities of Russian Maritime Register of Shipping (RS) are aimed at providing the safety of navigation, safety of life at sea, security of ships, safe carriage of cargo, environmental safety of ships, prevention of pollution from ships, performance of authorizations issued by Administrations and customers.

RS develops and continually improves the RS rules and guidelines in compliance with requirements of the international standards to ensure the safety at sea and pollution prevention.

The RS task is both to maintain its own quality management system at the highest possible level and to promote also implementation of high technical standards in design of ships, shipbuilding and shipping industry using its unique experience in ensuring maritime safety.



Germanischer Lloyd (GL)

A classification society based in the city of Hamburg, Germany. As a technical supervisory organization Germanischer Lloyd conducts safety surveys on more than 7,000 ships with over 79 Mio GT. Its technical and engineering services also include the mitigation of risks and assurance of technical compliance for oil, gas and industrial installations as well as wind energy parks.



Underwriters Laboratories (UL)

An independent product safety certification organization that develops standards and test procedures for products, materials, components, assemblies, tools and equipment, chiefly dealing with product safety.

Aramco 9COM



ISO TS 16949

ISO/TS 16949 is designed to address quality management in the automotive supply chain. It is based on the eight quality management principles: customer focus, leadership, involvement of people, process approach, system approach to management, continual improvement, fact-based decision making, and mutually beneficial supplier relationships. In addition, ISO/TS 16949 focuses on customer specific requirements.

ISO 14001

The ISO 14000 environmental management standards exist to help organizations (a) minimize how their operations (processes etc.) negatively affect the environment (i.e. cause adverse changes to air, water, or land); (b) comply with applicable laws, regulations, and other environmentally oriented requirements, and (c) continually improve in the above.

ISO 9001

The ISO 9000 family of standards relate to quality management systems and are designed to help organizations ensure they meet the needs of customers and other stakeholders. The standards are published by ISO, the International Organization for Standardization and available through National standards bodies. ISO 9000 deals with the fundamentals of quality management systems, including the eight management principles on which the family of standards is based. ISO 9001 deals with the requirements that organizations wishing to meet the standard have to fulfill.



British Standards Institution (BSI)



CE

CE marking is a mandatory conformity mark for products placed on the market in the European Economic Area (EEA). With the CE marking on a product the manufacturer ensures that the product conforms with the essential requirements of the applicable EC directives. The letters "CE" stand for "Conformité Européenne" ("European Conformity").

BAND-IT[®]

ENGINEERED CLAMPING SOLUTIONS

More Clamps
More Markets
More Solutions!

Aerospace
Automotive
Cable TV
Coal & Power
Construction
Electrical
Government
Industrial
Marine
Military
Mining
Municipal
Oil & Gas
Petrochemical
Pole & Signal Mounting
Ship Building
Solar
Subsea
Telecommunications
Traffic
Utility



IDEX

Copyright BAND-IT[®]

A Unit of IDEX Corporation

Denver, Colorado U.S.A. 2015 Rev 2. All rights reserved.

WWW.BAND-IT-IDEX.COM